



# PARTS CATALOG

Published

2011/5 (May.)

---

0CNP4-G75300

## Directions for the Parts Catalog.

1. The parts stipulated in this Parts Catalog are not necessarily standard equipped parts.
2. Parts may change without prior notice.
3. The following is an example of the Parts Catalog format.

REF.	LEV.	PARTS NO.	DESCRIPTION	Q'TY						I	R
				(A)	(B)	(C)	(D)	(E)	(F)		
1	1	729595-51390	FUEL INJECTION PUMP	1	1	1	1	1			1
1-1	1	729595-51391	FUEL INJECTION PUMP	1	1	1	1	1		N	1
		(A=E00185) (B=E00200)									
3	2	26022-060162	SCREW M 6X 16	9	9	9	9	9			
3-1	2	26022-060162	SCREW M 6X 16	4	4	4	4	4		K	
		(A=E00156) (B=E00156) (C=E00156) (D=E00156) (E=E00156)									
4	2	129470-51040	CAMSHAFT	1	1	1	1	1			
5	2	122710-51050	BEARING, ROLLER	2	2	2	2	2			
6	2	129470-51060	RETAINER	1	1	1	1	1			

Remarks
(1) BOOST COMPEMSATOR TYPE. OPTIONAL PART, TO E00155,(4JH-DT, 4JH-DTZ

### ① Ref. No.

The Ref. No. listed may not be in accordance with the illustration Ref. No.

(Ex.) Illustration No.

List Ref No.

1

1

(Before change)

1-1

(After change)

For interchangeable symbols N, R and K, illustrations for new parts may be abbreviated.

### ② Lev. (Level)

Level indication

The numbers below indicate the level of relativity towards the main part.

1 ----- Main parts (Assembly parts)

2 ----- Sub component included in " 1 ".

3 ----- Sub component included in " 2 ".

Note) Parts that are not for sale are partially illustrated but not listed.

### ③ Interchangeability Mark

When a part change takes place, one of the following interchangeability symbols is indicated beside the part.

Symbol	Interchangeability	Contents note
N	Old $\begin{matrix} \leftarrow \text{Yes} \\ \text{No} \rightarrow \end{matrix}$ New	New Part is interchangeable for Old Part but Old Part is not interchangeable for New Part.
Q	Old $\begin{matrix} \leftarrow \text{No} \\ \text{Yes} \rightarrow \end{matrix}$ New	New Part is not interchangeable for Old Part but Old Part is interchangeable for New Part.
R	Old $\begin{matrix} \leftarrow \text{Yes} \\ \text{Yes} \rightarrow \end{matrix}$ New	New/ Old Parts are both interchangeable.
S	Old $\begin{matrix} \leftarrow \text{No} \\ \text{No} \rightarrow \end{matrix}$ New	New/ Old Parts are both not interchangeable.
W		Part newly added.
Z		Part discontinued.
F		Not interchangeable by a single part but interchangeable together with related parts.
K		Changes only for used parts quantities.

### ④ Effective Machine No.

When a part changes, the effective Machine No. will be indicated in the (A)-(F) column.

Product Symbol	Product No.	Product Symbol	Product No.
C	Clutch No. Compressor No.	F	Machine No. (Agricultural Equip.)
D	Drive No.	M	Machine No.
E	Engine No.		

Note 1) A date may follow the symbol. (Ex.) 1996.01

Note 2) " XXXXX " and " ZZZZZ " are for parts that could not be predicted or for engine models that could not be identified.

Note 3) (A=E00185) is the E (Engine Serial Number) for the column (A) model (in this case 4JH-DT) after the parts design change.

### ⑤ Remarks Mark

Figures or alphabets (symbols) are entered in the remarks column.

The comments (remarks) on parts that are indicated at the bottom of the illustration are the same symbols as those stated above.

## PAINT COLOR (FP35, PQ)

FIG	PAINT COLOR	COLOR SPRAY	MAIN PART	COLOR NUMBER
TILLING SECTION	YANMAR RED 2	TOR-90000004	COVER, ROTARY	10
HANDLE SECTION	YANMAR WHITE	TOR-90250002	HANDEL	14
HANDLE SECTION	YANMAR GRAY	TOR-90360003	STAND ASSY	20
TILLING SECTION	YANMAR BLACK	TOR-90220003	SHAFT ASSY	12
TAIL WHEEL SECTION	YANMAR PLAIN SILVER METALLIC	TOR-90310003	WHEEL, FRONT	16

Please surely use YANMAR Genuine color spray any  
YANMAR agricultural machines

Given painting color may be altered for improvement, etc.  
without prior notice.

# CONTENTS

MODEL : GA100E-SKA(N4753

PC NO : 0CNP4-G75400

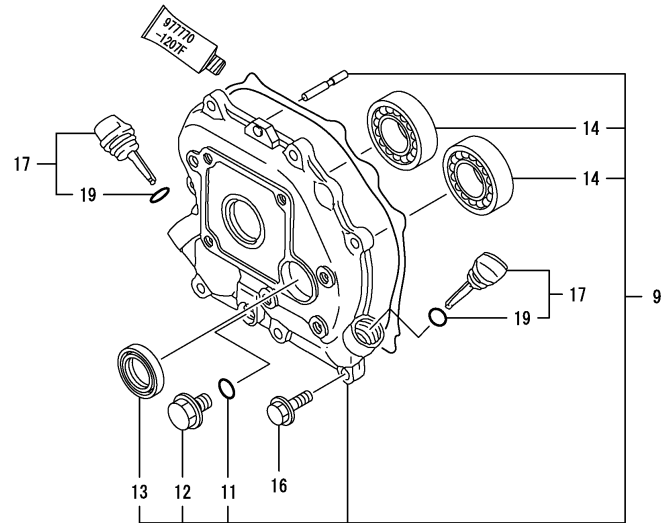
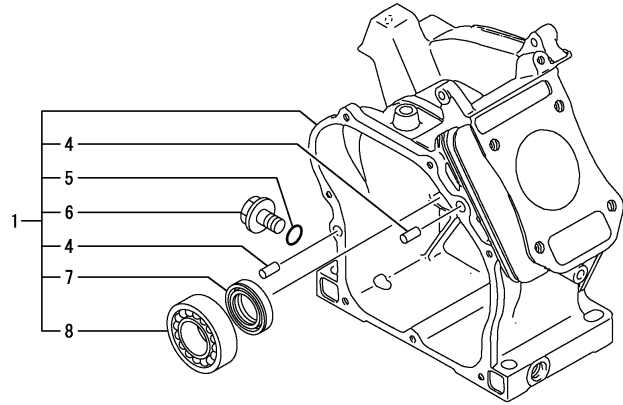
Fig.No. GROUP NAME

## ENGINE SECTION

1. CYLINDER BLOCK
2. CYLINDER HEAD & BONNET
3. LABEL
4. AIR CLEANER & MUFFLER
5. CRANKSHAFT,PISTON & CAMSHAFT
6. CARBURETOR
7. GOVERNOR & CONTROL DEVICE
8. FLYWHEEL MAG.& STARTING DEVICE

Fig.No. GROUP NAME

Fig.1. CYLINDER BLOCK



0CNP4-G75400 1. CYLINDER BLOCK

(A)=GA100E-SKA

(B)=

(C)=

(D)=

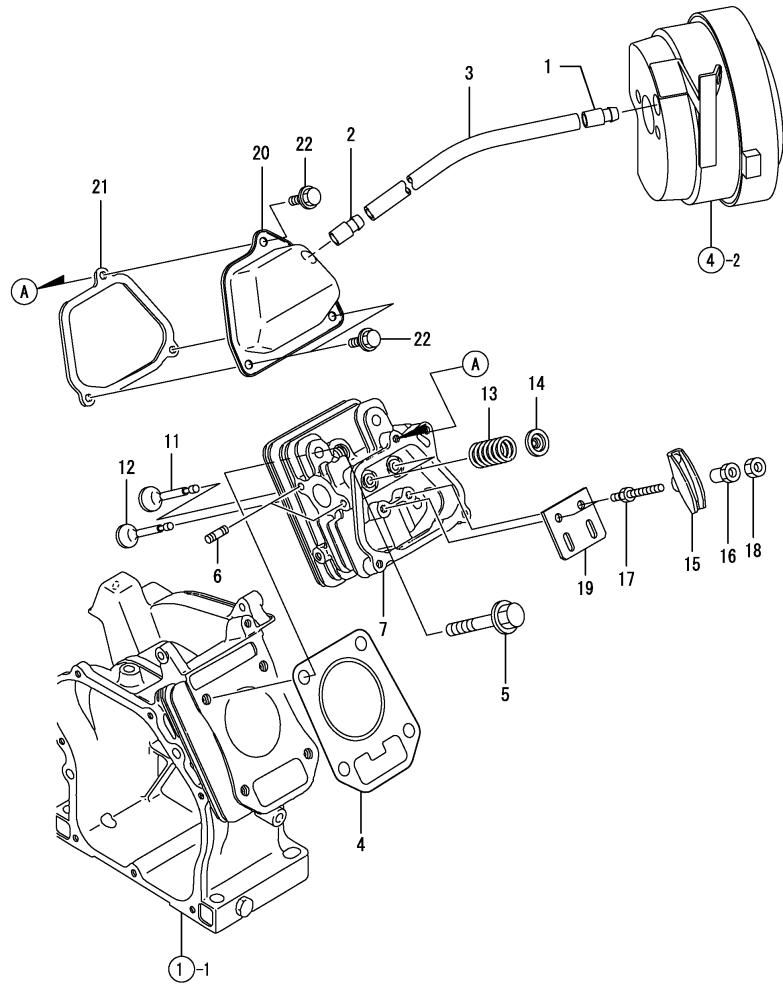
(E)=

(F)=

REF.	LEV.	PARTS NO.	DESCRIPTION	QTY						I	R
				(A)	(B)	(C)	(D)	(E)	(F)		
1	1	760496-01561	BLOCK ASSY, CYLINDER	1							
4	2	114270-01600	PARALLEL PIN 8X12	2							
5	2	24311-000100	O-RING 1A P-10.0	1							
6	2	26106-100162	BOLT M10X 16 PLATED	1							
7	2	160510-02220	SEAL, OIL	1							
8	2	24101-062030	BALL BEARING	1							
9	1	760490-01500	COVER,CRANKCASE	1							
11	2	24311-000100	O-RING 1A P-10.0	1							
12	2	26106-100162	BOLT M10X 16 PLATED	1							
13	2	160510-02220	SEAL, OIL	1							
14	2	24101-062030	BALL BEARING	2							
16	1	26476-060202	BOLT M 6X 20,TAPPING	7							
17	1	160611-01741	CAP ASSY	2							
19	2	160490-01760	O-RING	2							

Remarks  
 (REMARKS)"EFFECTIVE MACHINE NO." OF  
 ENGINE IS INDICATED ON THE  
 ENGINE LABEL WHICH IS SHOWN  
 IN FIG.8.

Fig.2. CYLINDER HEAD & BONNET



0CNP4-G75400 2. CYLINDER HEAD & BONNET

(A)=GA100E-SKA

(B)=

(C)=

(D)=

(E)=

(F)=

REF.	LEV.	PARTS NO.	DESCRIPTION	QTY						I	R
				(A)	(B)	(C)	(D)	(E)	(F)		
1	1	160520-03050	BREATHER.MT.	1							
2	1	160610-03050	BREATHER ASSY	1							
3	1	160510-03180	PIPE, BREATHER	1							
4	1	160498-01330	GASKET, CYL. HEAD	1							
5	1	160610-04201	BOLT M 8X 53	4							
6	1	26226-060162	STUD M 6X 16 PLATED	2							
7	1	160490-11010	HEAD ASSY, CYLINDER	1							
11	1	160664-11100	INLET VALVE	1							
12	1	160664-11110	EXHAUST VALVE	1							
13	1	160490-11120	SPRING, VALVE	2							
14	1	160664-11180	RETAINER, VALVE	2							
15	1	160699-11200	ARM,VALVE ROCKER	2							
16	1	160690-11222	PIVOT,ROCKER ARM	2							
17	1	160690-11271	BOLT	2							
18	1	160690-11280	NUT M6X 0.5	2							
19	1	160490-11290	GUIDE PLATE	1							
20	1	160490-11300	BONNET	1							
21	1	160490-11311	GASKET, BONNET	1							
22	1	26106-060142	BOLT M 6X 14 PLATED	3							

Remarks

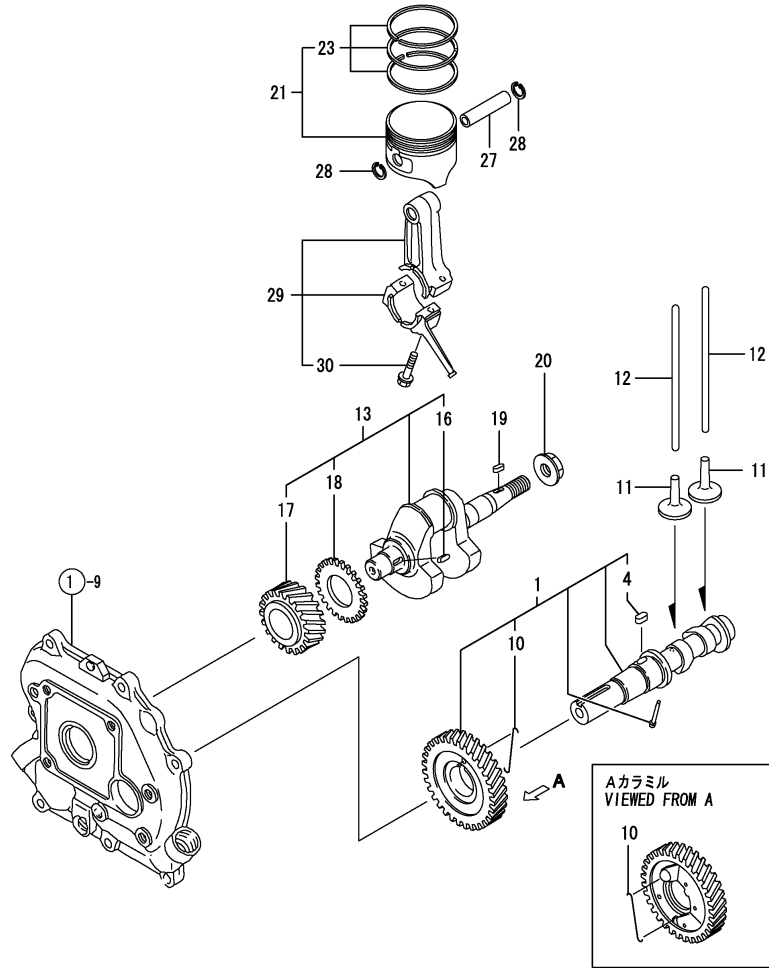
(REMARKS)"EFFECTIVE MACHINE NO." OF ENGINE IS INDICATED ON THE ENGINE LABEL WHICH IS SHOWN IN FIG.8.







Fig.5. CRANKSHAFT,PISTON & CAMSHAFT



Remarks  
 (REMARKS)"EFFECTIVE MACHINE NO." OF  
 ENGINE IS INDICATED ON THE  
 ENGINE LABEL WHICH IS SHOWN  
 IN FIG.8.

0CNP4-G75400 5. CRANKSHAFT,PISTON & CAMSHAFT

(A)=GA100E-SKA

(B)=

(C)=

(D)=

(E)=

(F)=

REF.	LEV.	PARTS NO.	DESCRIPTION	Q'TY						I	R
				(A)	(B)	(C)	(D)	(E)	(F)		
1	1	160498-14051	CAM-SHAFT ASSY	1							
4	2	114250-21290	KEY 4X 7	1							
10	2	160611-14560	SPRING	1							
11	1	160490-14200	TAPPET	2							
12	1	160490-14400	ROD,PUSH	2							
13	1	760498-21701	CRANKSHAFT ASSY	1							
16	2	160610-21290	KEY 4X 10	1							
17	2	160530-21200	GEAR, CRANKSHAFT	1							
18	2	160590-21210	GEAR, IDLE	1							
19	1	160610-21290	KEY 4X 10	1							
20	1	26376-120002	U-NUT M12	1							
21	1	160496-22010	PISTON ASSY	1							
23	2	760496-22500	RING SET, PISTON	1							
27	1	160490-22300	PIN, PISTON	1							
28	1	22252-000120	CIRCLIP 12	2							
29	1	160490-23030	ROD ASSY, CONNECTING	1							
30	2	26106-060302	BOLT M 6X 30 PLATED	2							

Fig.6. CARBURETOR

(A)=GA100E-SKA

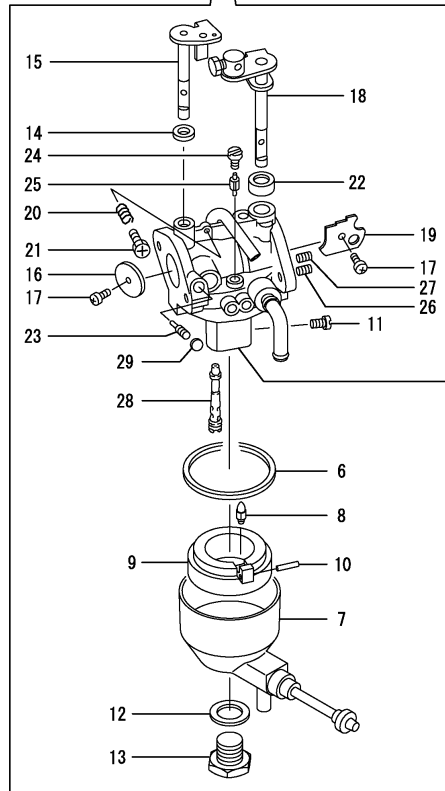
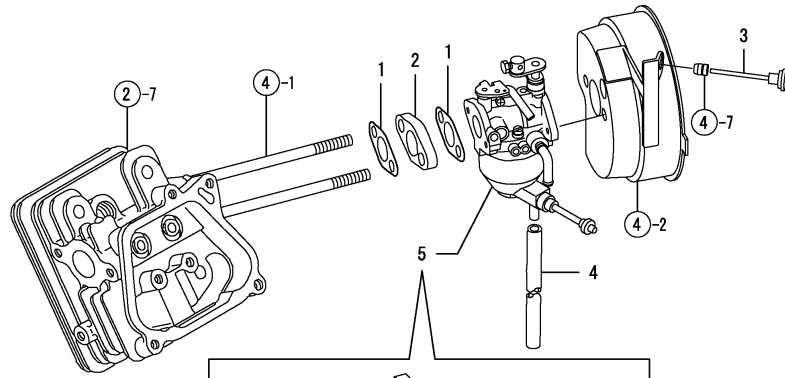
(B)=

(C)=

(D)=

(E)=

(F)=



REF.	LEV.	PARTS NO.	DESCRIPTION	QTY						I	R
				(A)	(B)	(C)	(D)	(E)	(F)		
1	1	160667-56151	GASKET, CARBURETOR	2							
2	1	160667-56160	SPACER, CARBURETOR	1							
3	1	160692-56900	ROD, CHOKE	1							
4	1	160498-55910	PIPE, COOLING WATER	1							
5	1	160496-57050	CARBURETOR ASSY	1							
6	2	160493-56610	GASKET, FLOAT CHAMB.	1							
7	2	160498-56840	CHAMBER CMP.,FLOAT.	1							
8	2	160493-56720	VALVE, FLOAT	1							
9	2	160493-56620	FLOAT ASSY.	1							
10	2	160493-56630	PIN, FLOAT	1							
11	2	160496-57730	JET, MAIN	1							
12	2	160493-56730	GASKET, CHAMBER SET	1							
13	2	160493-56740	PLUG, CHAMBER SET	1							
14	2	160493-56850	FILTER, AIR	1							
15	2	160498-56640	SHAFT ASSY, THROTTLE	1							
16	2	160498-56540	VALVE, THROTTLE	1							
17	2	160493-56550	SCREW, VALVE SET	2							
18	2	160493-56660	SHAFT COMP.,CHOKE	1							
19	2	160492-56480	VALVE, CHOKE	1							
20	2	160493-56710	SPRING, ADJUST SCREW	1							
21	2	160493-56700	SCREW,THROTTLE ADJUS	1							
22	2	160493-56800	CAP, SEALING	1							
23	2	160699-56680	NEEDLE, IDLE ADJUST	1							
24	2	160699-56760	PLUG,SLOW JET	1							
25	2	160496-57740	JET,SLOW	1							
26	2	160496-57700	JET, AIR BLEED	1							
27	2	160492-56710	JET,SLOW AIR BLEED	1							
28	2	160496-57710	NOZZLE, MAIN	1							
29	2	160699-56780	PLUG	1							

Remarks  
 (REMARKS)"EFFECTIVE MACHINE NO." OF  
 ENGINE IS INDICATED ON THE  
 ENGINE LABEL WHICH IS SHOWN  
 IN FIG.8.

Fig.7. GOVERNOR & CONTROL DEVICE

(A)=GA100E-SKA

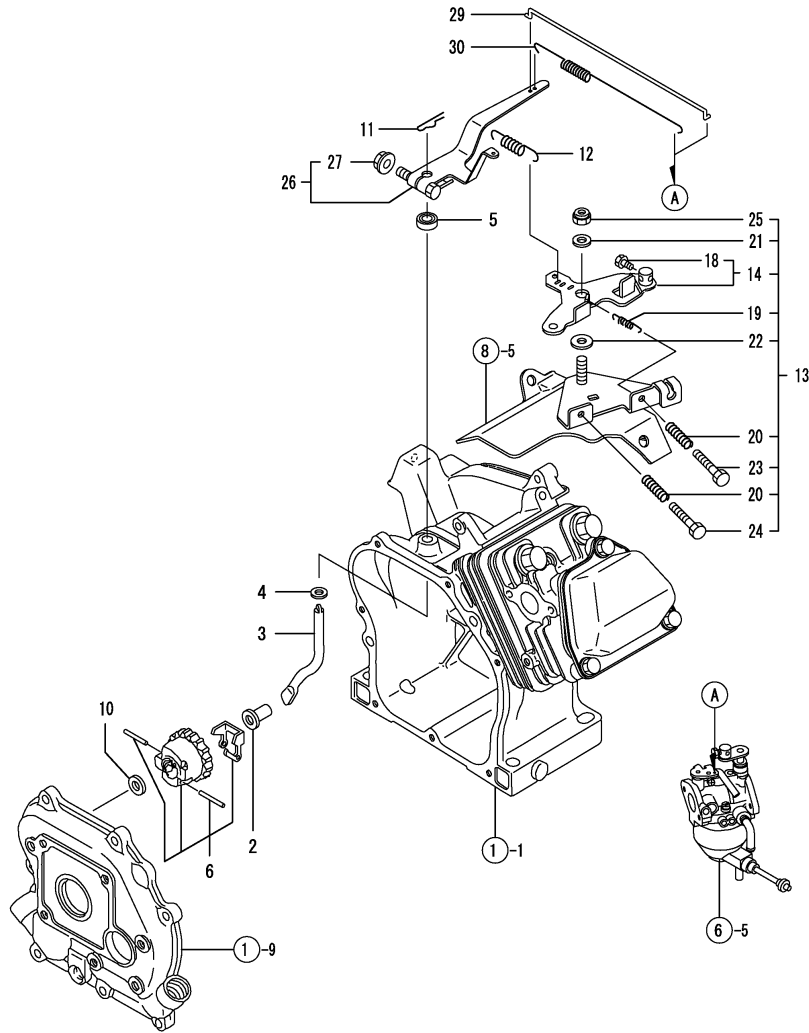
(B)=

(C)=

(D)=

(E)=

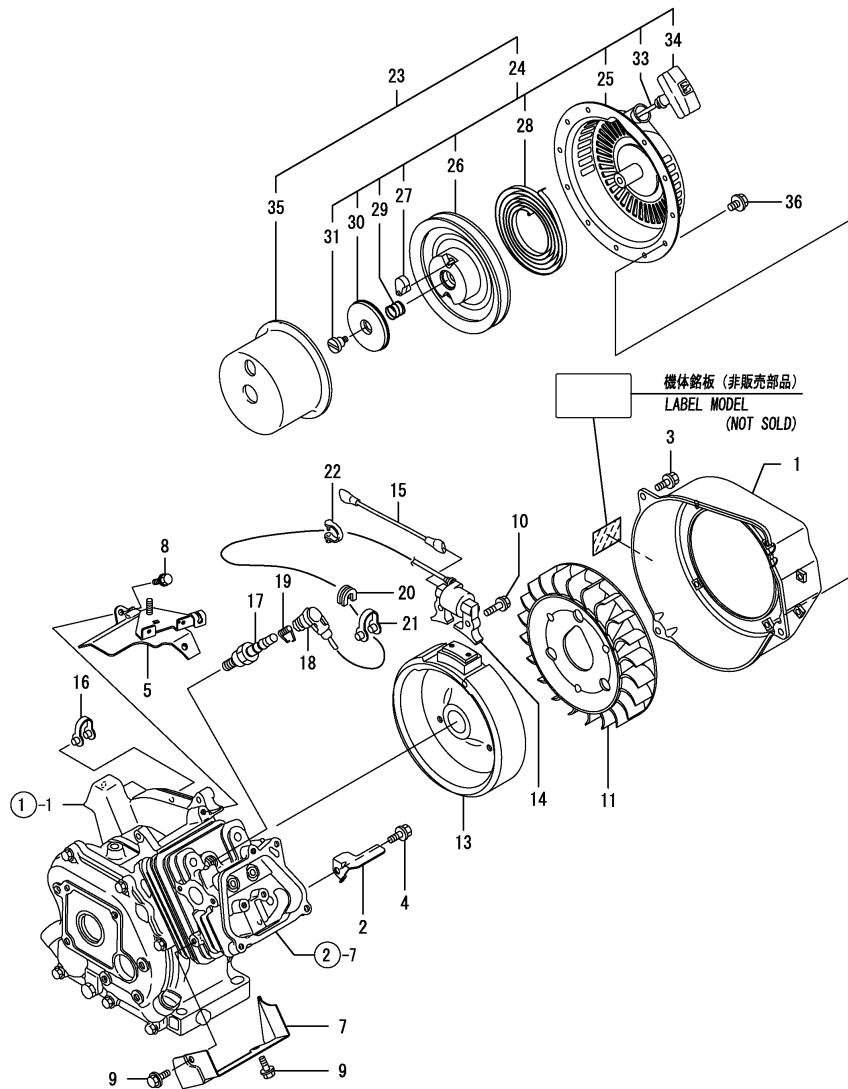
(F)=



REF.	LEV.	PARTS NO.	DESCRIPTION	QTY						I	R
				(A)	(B)	(C)	(D)	(E)	(F)		
2	1	160690-61301	SPINDLE, GOVERNOR	1							
3	1	160690-61311	SHAFT, GOV. LEVER	1							
4	1	160690-61450	WASHER	1							
5	1	114770-61600	SEAL, OIL	1							
6	1	160690-61600	GEAR ASSY, GOV.	1							
10	1	160120-76940	WASHER	1							
11	1	22372-080000	SNAP PIN (JASO 8)	1							
12	1	160490-66020	SPRING	1							
13	1	160492-66100	CONTROL ASSY	1							
14	2	160692-66051	LEVER ASSY, CONTROL	1							
18	3	26117-040088	BOLT M 4X 8 PLATED	1							
19	2	160664-66220	SPRING, RETURN	1							
20	2	160520-66291	SPRING	2							
21	2	160670-66350	COLLAR	1							
22	2	160120-76940	WASHER	1							
23	2	26117-040257	BOLT M 4X 25	1							
24	2	26117-040309	BOLT M 4X 30 PLATED	1							
25	2	26347-060002	U-NUT M 6	1							
26	1	160490-66191	LEVER, GOVERNOR	1							
27	2	26366-060002	NUT M 6	1							
29	1	160490-66200	LINK, THROTTLE	1							
30	1	160798-66210	SPRING, TENSION	1							

Remarks  
 (REMARKS)"EFFECTIVE MACHINE NO." OF  
 ENGINE IS INDICATED ON THE  
 ENGINE LABEL WHICH IS SHOWN  
 IN FIG.8.

Fig.8. FLYWHEEL MAG.& STARTING DEVICE



Remarks  
 (REMARKS)"EFFECTIVE MACHINE NO." OF  
 ENGINE IS INDICATED ON THE  
 ENGINE LABEL WHICH IS SHOWN  
 IN FIG.8.

0CNP4-G75400 8. FLYWHEEL MAG.& STARTING DEVICE

(A)=GA100E-SKA  
 (B)=  
 (C)=

(D)=  
 (E)=  
 (F)=

REF.	LEV.	PARTS NO.	DESCRIPTION	QTY						I	R
				(A)	(B)	(C)	(D)	(E)	(F)		
1	1	160490-45140	CASE, FAN (WHITE:14)	1							
2	1	160490-45240	GUIDE,COOLING AIR	1							
3	1	26476-060142	BOLT M 6X 14,TAPPING	3							
4	1	26476-060142	BOLT M 6X 14,TAPPING	1							
5	1	160490-45220	HEAD, CYLINDER	1							
7	1	160490-45230	COVER, CYLINDER	1							
8	1	26476-060142	BOLT M 6X 14,TAPPING	2							
9	1	26476-060142	BOLT M 6X 14,TAPPING	2							
10	1	160690-04350	BOLT M6X30	2							
11	1	160490-45010	FAN, COOLING	1							
13	1	160490-78540	ROTOR	1							
14	1	160490-78550	COIL,LIGHTING	1							
15	1	160490-78230	CORD,STOP	1							
16	1	29610-000650	CLAMP, SPEED 065	2							
17	1	160793-78010	PLUG, SPARK	1							
18	1	160700-78041	CAP, PLUG	1							
19	1	160700-78050	TERMINAL, PLUG	1							
20	1	160700-78720	GROMMET	1							
21	1	29610-000950	CLAMP, SPEED 095	1							
22	1	29610-001400	CLAMP	1							
23	1	160490-76070	STARTER ASSY, RECOIL	1							
24	2	160490-76290	RECOIL ASSY, STARTER	1							
25	3	160498-76730	CASE ASSY, STARTER	1							
26	3	160498-76740	REEL	1							
27	3	160498-76640	RATCHET	2							
28	3	160498-76750	SPRING, SPIRAL	1							
29	3	160690-76561	SPRING, FRICTION	1							
30	3	160498-76670	GUIDE, RATCHET	1							
31	3	160698-76580	SETSCREW	1							
33	3	160498-76770	ROPE, STARTER	1							
34	3	160690-76670	KNOB, STARTER	1							
35	2	160490-76651	PULLEY, STARTER	1							
36	1	26106-060082	BOLT M 6X 8 PLATED	4							

## Part Number Index

All parts are stipulated in the order of part numbers.

(Depending on the area in which the part is used.)

This index will display the location of the part according to each part number.

## PARTS No. INDEX

PARTS No.	Fig.	Ref.No.
114250-12300	4	9
114250-21290	5	4
114252-13950	4	20
114270-01600	1	4
114770-61600	7	5
160120-76940	7	10
160490-01760	1	19
160490-11010	2	7
160490-11120	2	13
160490-11290	2	19
160490-11300	2	20
160490-11311	2	21
160490-14200	5	11
160490-14400	5	12
160490-22300	5	27
160490-23030	5	29
160490-45010	8	11
160490-45140	8	1
160490-45220	8	5
160490-45230	8	7
160490-45240	8	2
160490-66020	7	12
160490-66191	7	26
160490-66200	7	29
160490-76070	8	23
160490-76290	8	24
160490-76651	8	35
160490-78230	8	15
160490-78540	8	13
160490-78550	8	14
160492-56480	6	19
160492-56710	6	27
160492-66100	7	13
160493-56550	6	17
160493-56610	6	6
160493-56620	6	9
160493-56630	6	10
160493-56660	6	18
160493-56700	6	21
160493-56710	6	20
160493-56720	6	8
160493-56730	6	12
160493-56740	6	13
160493-56800	6	22
160493-56850	6	14
160496-07490	3	5
160496-13030	4	10
160496-13450	4	11
160496-13710	4	18

PARTS No.	Fig.	Ref.No.
160496-22010	5	21
160496-56800	4	8
160496-57050	6	5
160496-57700	6	26
160496-57710	6	28
160496-57730	6	11
160496-57740	6	25
160498-01330	2	4
160498-12050	4	3
160498-12500	4	2
160498-14051	5	1
160498-55910	6	4
160498-56540	6	16
160498-56640	6	15
160498-56840	6	7
160498-76640	8	27
160498-76670	8	30
160498-76730	8	25
160498-76740	8	26
160498-76750	8	28
160498-76770	8	33
160510-02220	1	7
		13
160510-03180	2	3
160510-13201	4	19
160520-03050	2	1
160520-66291	7	20
160530-21200	5	17
160590-21210	5	18
160610-03050	2	2
160610-04201	2	5
160610-12530	4	4
160610-12540	4	5
160610-12550	4	6
160610-21290	5	16
		19
160611-01741	1	17
160611-14560	5	10
160664-07370	3	4
160664-11100	2	11
160664-11110	2	12
160664-11180	2	14
160664-66220	7	19
160667-56151	6	1
160667-56160	6	2
160670-66350	7	21
160690-04350	8	10
160690-04610	4	1
160690-07260	3	2
160690-11222	2	16

PARTS No.	Fig.	Ref.No.
160690-11271	2	17
160690-11280	2	18
160690-61301	7	2
160690-61311	7	3
160690-61450	7	4
160690-61600	7	6
160690-76561	8	29
160690-76670	8	34
160692-56900	6	3
160692-66051	7	14
160698-76580	8	31
160699-11200	2	15
160699-56680	6	23
160699-56760	6	24
160699-56780	6	29
160700-78041	8	18
160700-78050	8	19
160700-78720	8	20
160763-12600	4	7
160793-78010	8	17
160798-66210	7	30
160991-07260	3	3
760490-01500	1	9
760496-01561	1	1
760496-22500	5	23
760498-21701	5	13

PARTS No.	Fig.	Ref.No.
-----------	------	---------



***YANMAR CO.,LTD.***

# CONTENTS

MODEL : FP35,PQ  
PC NO : 0CNP4-G75300

Fig.No. GROUP NAME

## PULLEY & TENSION SECTION

1. ENGINE MOUNTING
2. ENGINE PULLEY
3. MAIN PULLEY
4. TENSION CLUTCH

## TRANSMISSION UNIT

5. TRANSMISSION CASE(TO M100365)
29. (5A)TRANSMISSION CASE(FROM M100366)
6. MAIN SHAFT
7. COUNTER SHAFT
8. REDUCTION SHAFT
9. FINAL SHAFT
10. AXLE(TO M100365)
30. (10A)AXLE(FROM M100366)
11. DIFFERENTIAL(TO M100365)
31. (11A)DIFFERENTIAL(FROM M100366)
12. MAIN CHANGE

## WHEEL SECTION

13. WHEEL

## TILLING SECTION

14. TILLING SHAFT
15. TINE SHAFT
16. TILLING COVER

## HANDLE SECTION

17. HANDLE
18. CONTROL LEVER

Fig.No. GROUP NAME

19. DIFFERENTIAL LOCK CONTROL

## ENGINE FRAME SECTION

20. ENGINE FRAME
21. BELT COVER
22. FUEL TANK
23. BONNET

## TAIL WHEEL SECTION

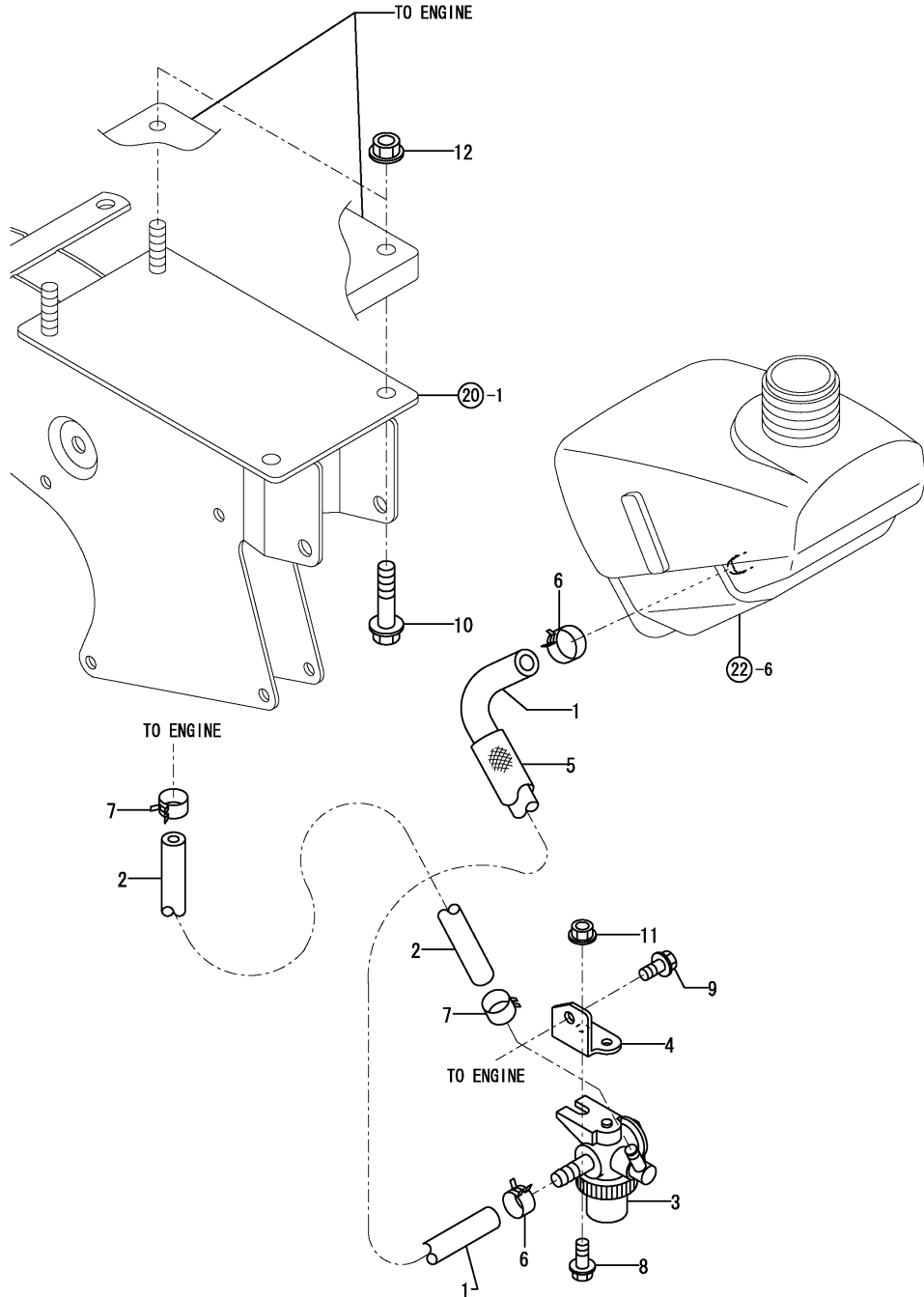
24. FRONT WHEEL

## ELECTRIC PART, LABELS & ACCESSORIES

25. ELECTRIC PART
26. LABELS
27. LABELS, SAFETY
28. TOOL & ACCESSORIES



Fig.1. ENGINE MOUNTING



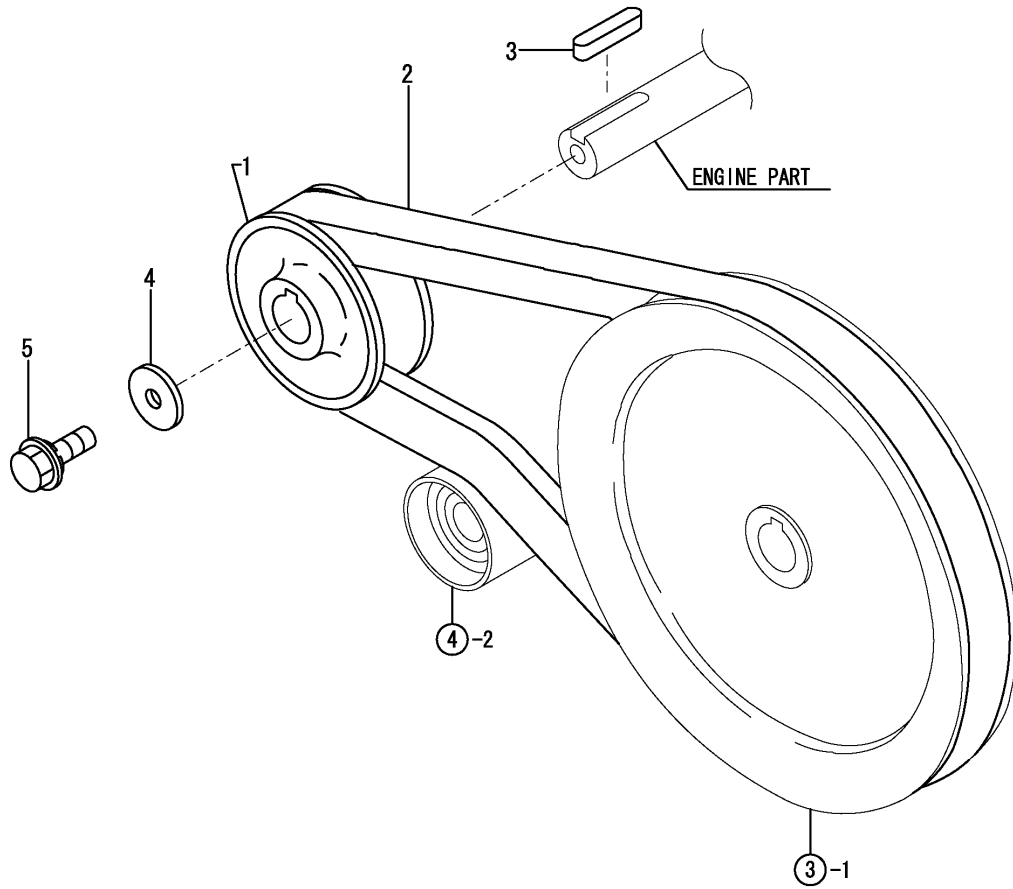
OCNP4-G75300 1. ENGINE MOUNTING

(A)=FP35,PQ  
(B)=  
(C)=

(D)=  
(E)=  
(F)=

REF.	LEV.	PARTS NO.	DESCRIPTION	QTY						I	R
				(A)	(B)	(C)	(D)	(E)	(F)		
1	1	1A2580-11010	PIPE, A 240	1							
2	1	1A2580-11030	PIPE, B 145	1							
3	1	1A2580-11100	COOK	1							
4	1	1A2580-11200	STAY	1							
5	1	1A2580-11500	PROTECT TUBE	1							
6	1	106990-44660	CLIP,HOSE	2							
7	1	124060-77680	CLAMP 10	2							
8	1	26107-060142	BOLT M 6X 14 PLATED	1							
9	1	26107-060142	BOLT M 6X 14 PLATED	1							
10	1	26107-080352	BOLT M 8X 35 PLATED	2							
11	1	26367-060002	NUT M 6	1							
12	1	26367-080002	U-NUT M 8	4							

Fig.2. ENGINE PULLEY



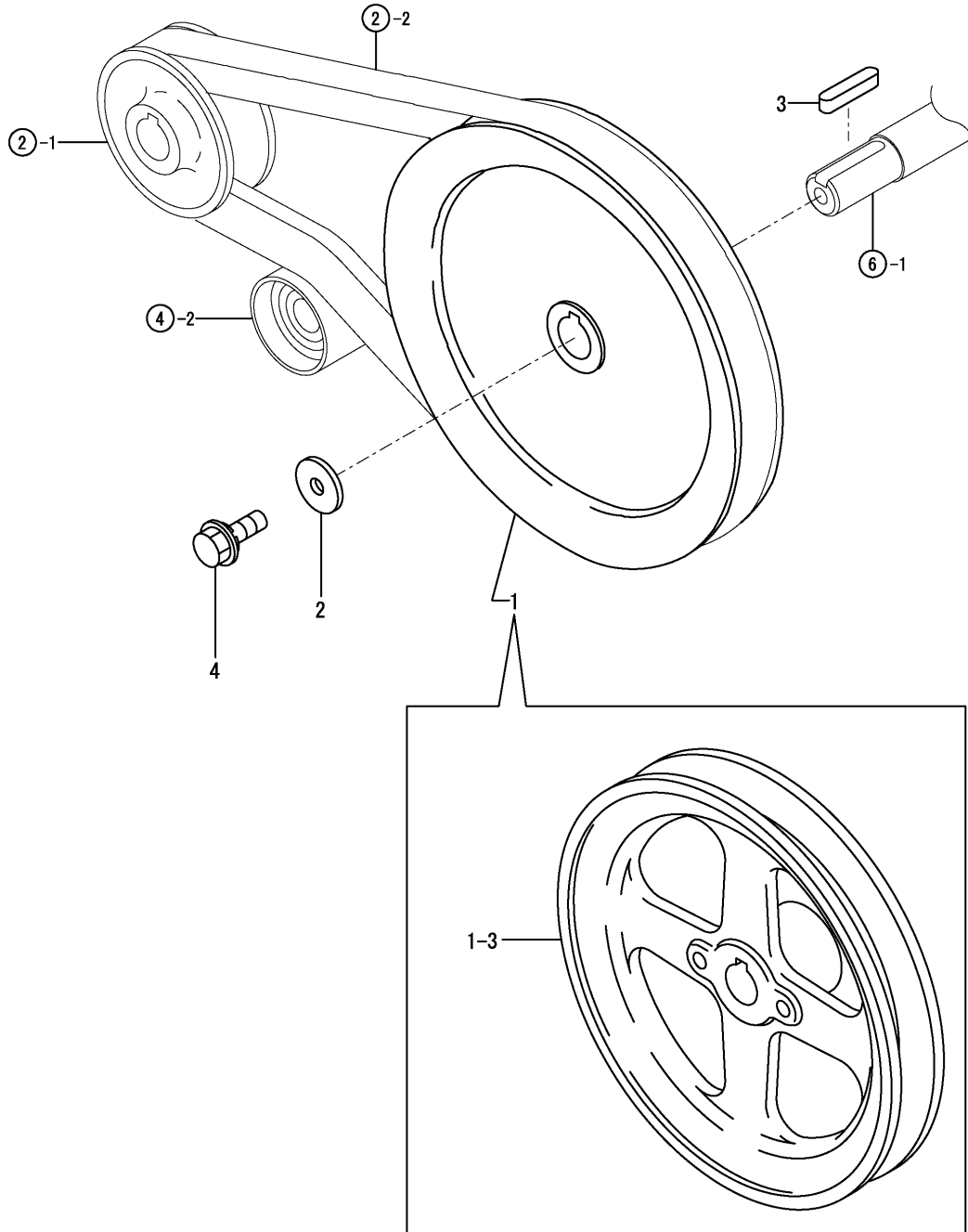
OCNP4-G75300 2. ENGINE PULLEY

(A)=FP35,PQ  
(B)=  
(C)=

(D)=  
(E)=  
(F)=

REF.	LEV.	PARTS NO.	DESCRIPTION	QTY						I	R	
				(A)	(B)	(C)	(D)	(E)	(F)			
1	1	1A2320-12100	PULLEY,ENGINE	1								
2	1	1A2320-12200	V-BELT(SB29	1								
3	1	1D1630-51050	KEY 4X25	1								
4	1	22157-060000	WASHER 6	1								
5	1	26013-060162	BOLT M 6X 16	1								

Fig.3. MAIN PULLEY



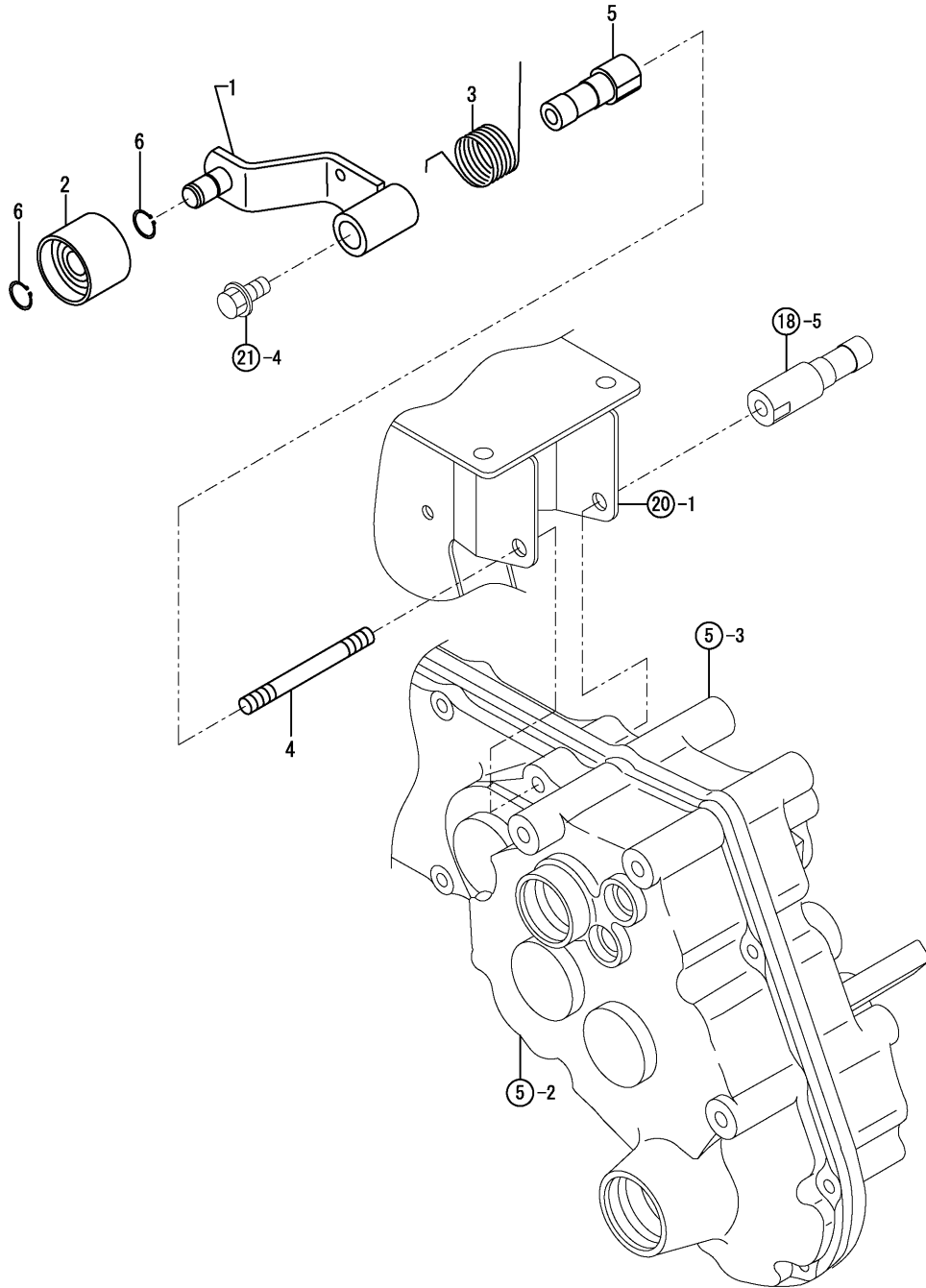
0CNP4-G75300 3. MAIN PULLEY

(A)=FP35,PQ  
(B)=  
(C)=

(D)=  
(E)=  
(F)=

REF.	LEV.	PARTS NO.	DESCRIPTION	Q'TY						I	R
				(A)	(B)	(C)	(D)	(E)	(F)		
1	1	1A2321-13300	V-PULLEY ASSY	1							
1-1	1	1A2320-13300	V-PULLEY 160	1							N
(A=FXXXXX)											
1-2	1	1A2320-13301	V PULLEY	1							N
(A=FXXXXX)											
1-3	1	1A2740-13300	V PULLEY	1							N
(A=FXXXXX)											
2	1	22157-060000	WASHER 6	1							
3	1	22550-050250	KEY 5X25	1							
4	1	26013-060162	BOLT M 6X 16	1							

Fig.4. TENSION CLUTCH



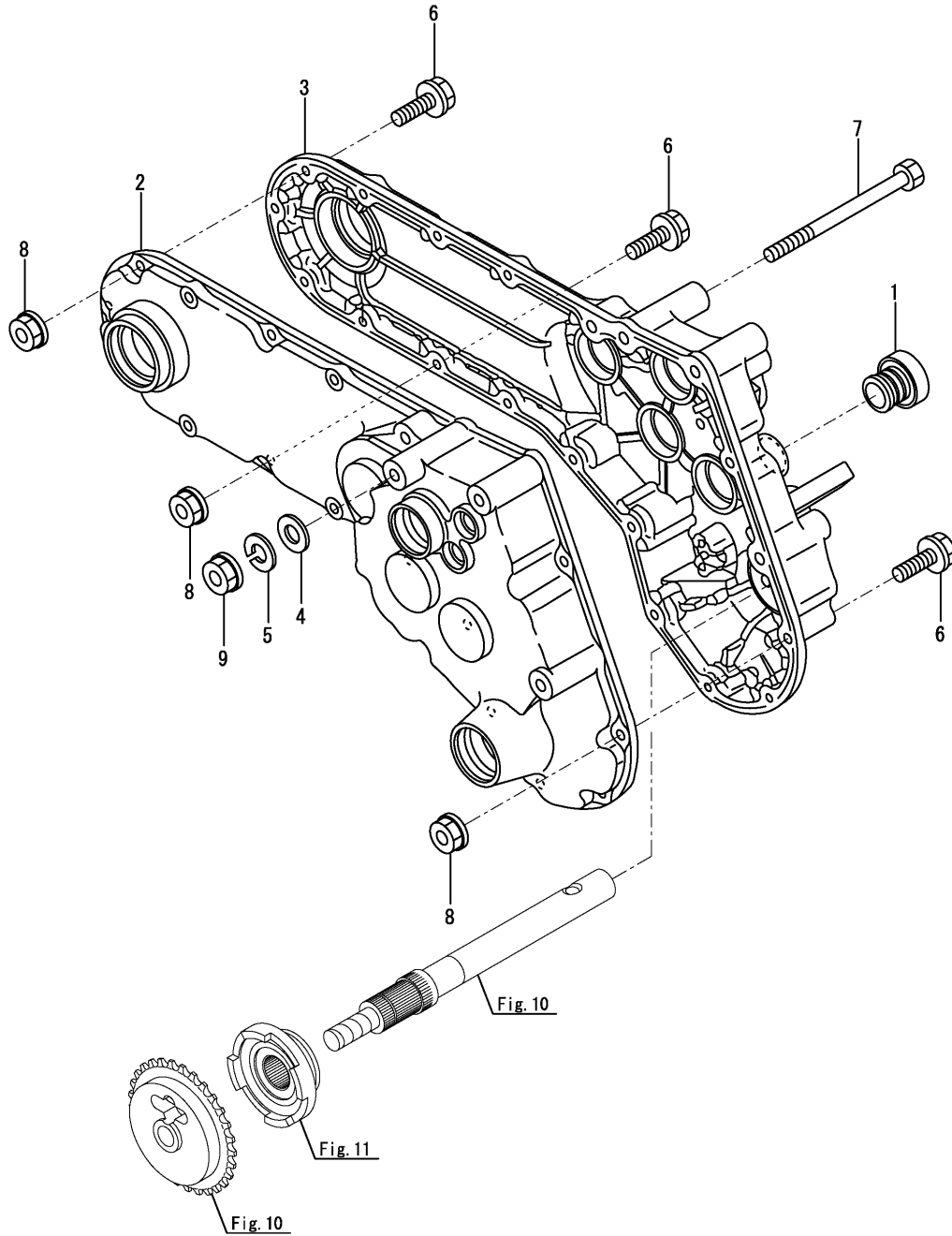
0CNP4-G75300 4. TENSION CLUTCH

(A)=FP35,PQ  
(B)=  
(C)=

(D)=  
(E)=  
(F)=

REF.	LEV.	PARTS NO.	DESCRIPTION	Q'TY						I	R
				(A)	(B)	(C)	(D)	(E)	(F)		
1	1	1A2320-13000	ARM, TENSION	1							
2	1	1A2320-13100	ROLLER COMP.,TENSION	1							
3	1	1A2120-13120	SPRING,TENSION RETRN	1							
4	1	1A2320-13200	TENSION BOLT	1							
5	1	1A2320-13250	NUT,TENSION	1							
6	1	22242-000120	CIRCLIP 12	2							

Fig.5. TRANSMISSION CASE(TO M100365)



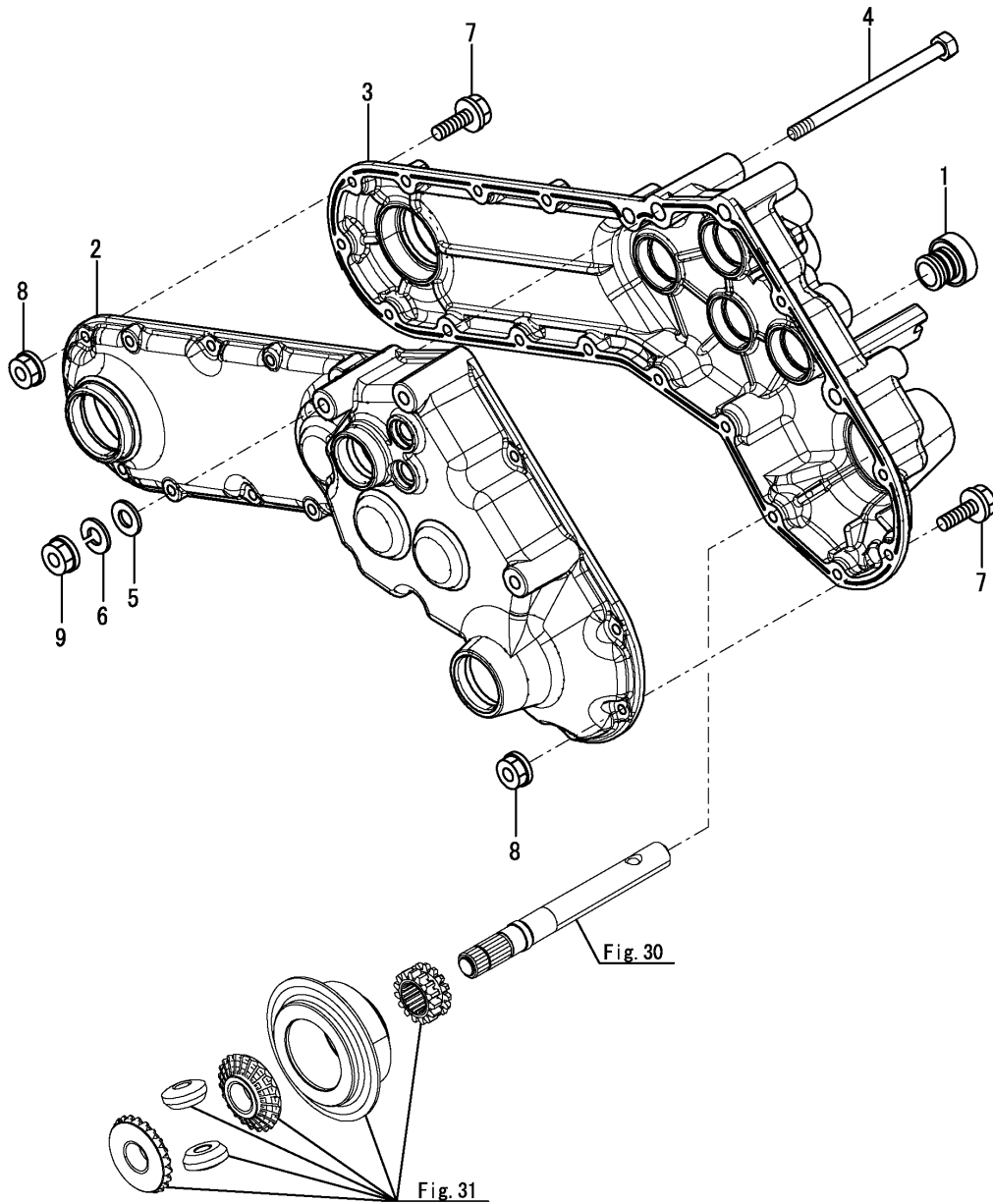
OCNP4-G75300 5. TRANSMISSION CASE(TO M100365)

(A)=FP35,PQ  
(B)=  
(C)=

(D)=  
(E)=  
(F)=

REF.	LEV.	PARTS NO.	DESCRIPTION	QTY						I	R
				(A)	(B)	(C)	(D)	(E)	(F)		
1	1	1A1470-20090	CAP 35,OIL FILLER	1							
2	1	1A2320-21000	CASE L,TRANSMISSION	1							
3	1	1A2320-21010	HOUSING (R), TRANS.	1							
4	1	22137-080000	WASHER 8, POLISHED	1							
5	1	22217-080000	SPRING WASHER 8	1							
6	1	26106-060202	BOLT M 6X 20 PLATED	12							
7	1	26116-081402	BOLT M 8X140 PLATED	1							
8	1	26367-060002	NUT M 6	12							
9	1	26367-080002	U-NUT M 8	1							

Fig.29. (5A)TRANSMISSION CASE(FROM M100366)



(A)=FP35,PQ

(B)=

(C)=

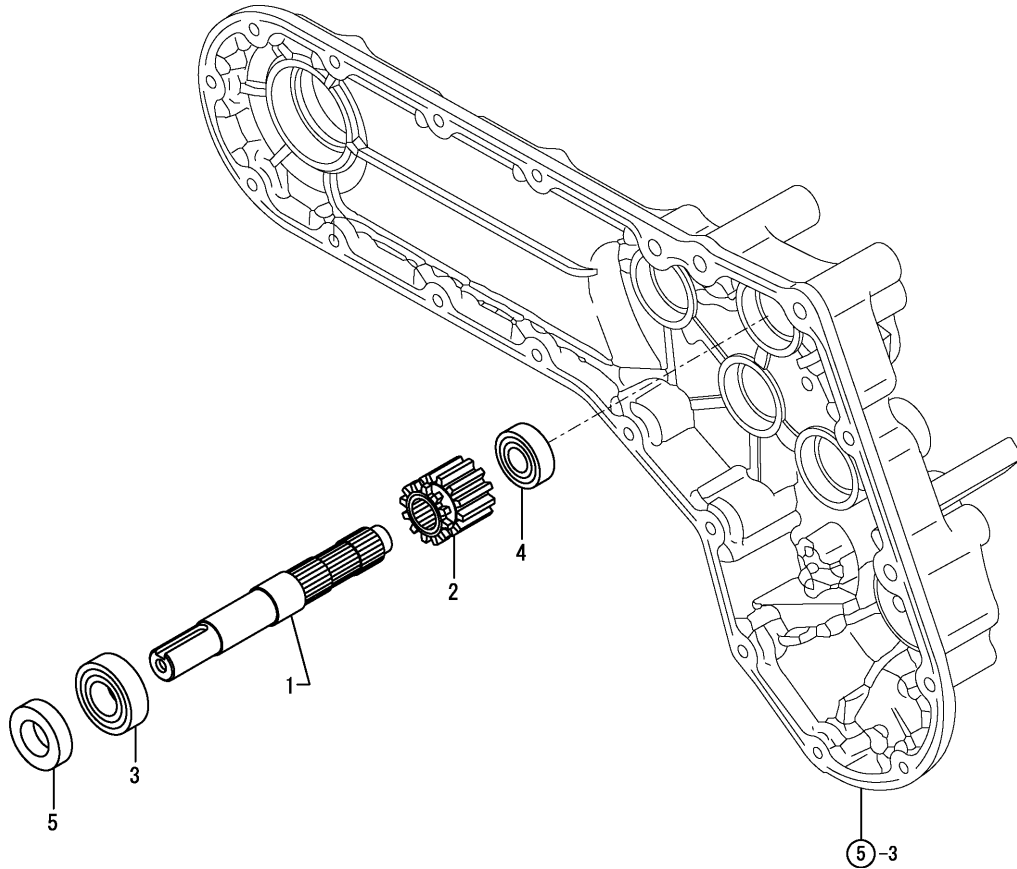
(D)=

(E)=

(F)=

REF.	LEV.	PARTS NO.	DESCRIPTION	QTY						I	R
				(A)	(B)	(C)	(D)	(E)	(F)		
1	1	1A1470-20090	CAP 35,OIL FILLER	1							
2	1	1A2780-21000	CASE, TRANSMISSION L	1							
3	1	1A2780-21010	CASE, TRANSMISSION R	1							
4	1	1A2171-51400	BOLT	1							
5	1	22137-080000	WASHER 8, POLISHED	1							
6	1	22217-080000	WASHER, 8	1							
7	1	26106-060202	BOLT M 6X 20 PLATED	12							
8	1	26367-060002	NUT M 6	12							
9	1	26367-080002	NUT, 8	1							

Fig.6. MAIN SHAFT



0CNP4-G75300 6. MAIN SHAFT

(A)=FP35,PQ  
(B)=  
(C)=

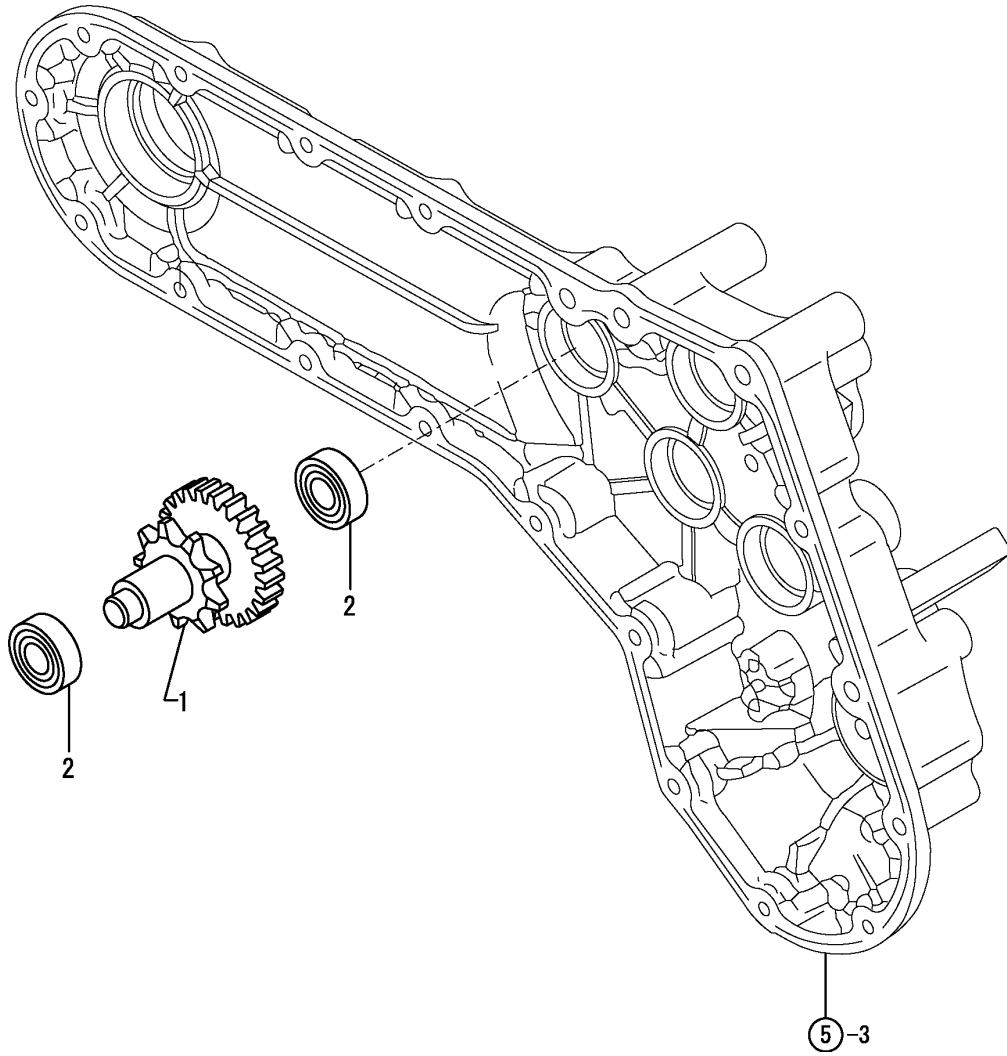
(D)=  
(E)=  
(F)=

REF.	LEV.	PARTS NO.	DESCRIPTION	Q'TY						I	R	
				(A)	(B)	(C)	(D)	(E)	(F)			
1	1	1A2321-23000	SHAFT, MAIN	1								
2	1	1A2321-23011	GEAR, 12	1								
3	1	24101-060034	BALL BEARING	1								
4	1	24101-062014	BALL BEARING	1								
5	1	24421-173008	SEAL TC17 30 08, OIL	1								





Fig.8. REDUCTION SHAFT



0CNP4-G75300 8. REDUCTION SHAFT

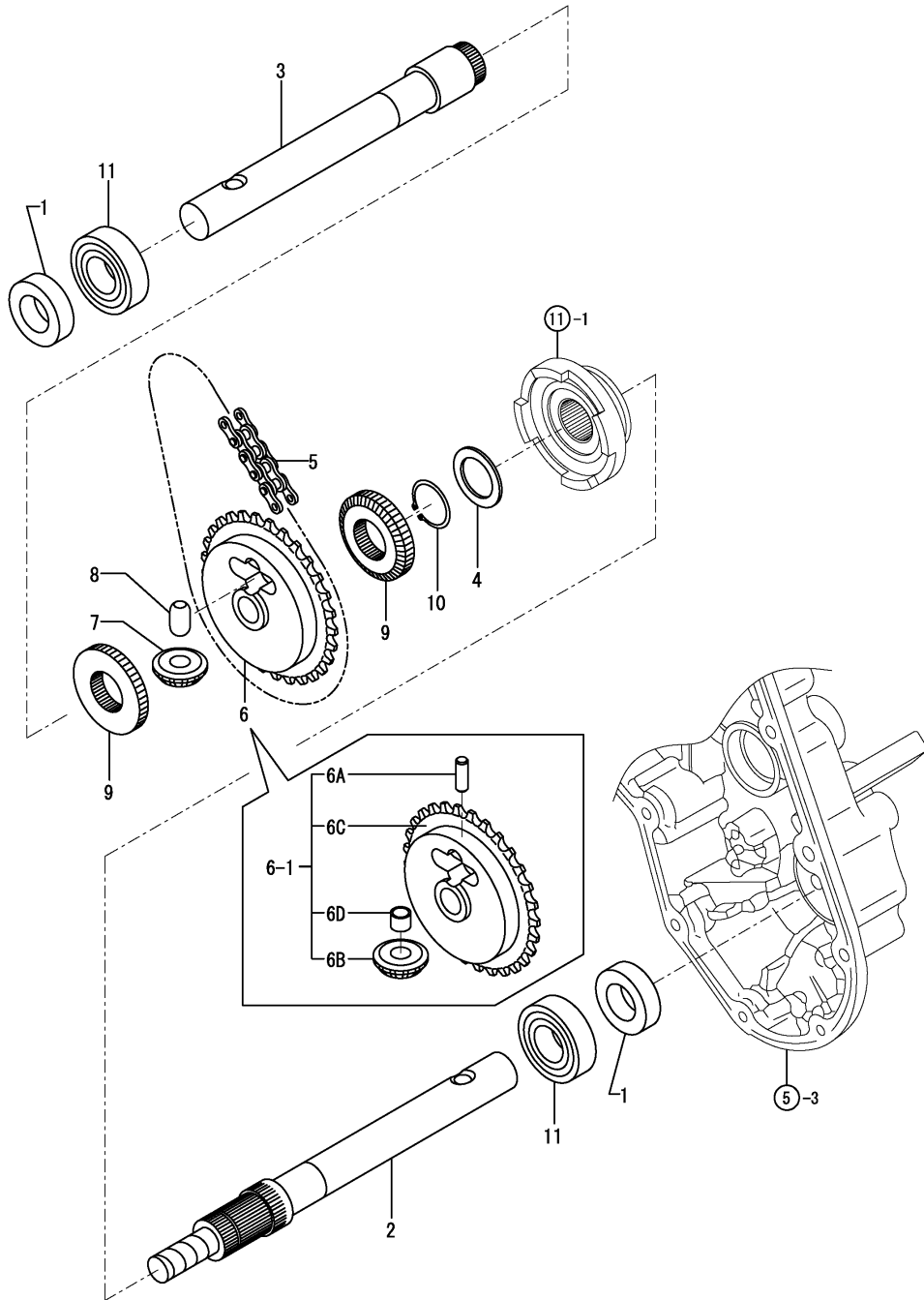
(A)=FP35,PQ  
(B)=  
(C)=

(D)=  
(E)=  
(F)=

REF.	LEV.	PARTS NO.	DESCRIPTION	QTY						I	R	
				(A)	(B)	(C)	(D)	(E)	(F)			
1	1	1A2321-23200	SHAFT COMP.,REDUCTN	1								
2	1	24101-062014	BALL BEARING	2								



Fig.10. AXLE(TO M100365)



(A)=FP35,PQ

(B)=

(C)=

(D)=

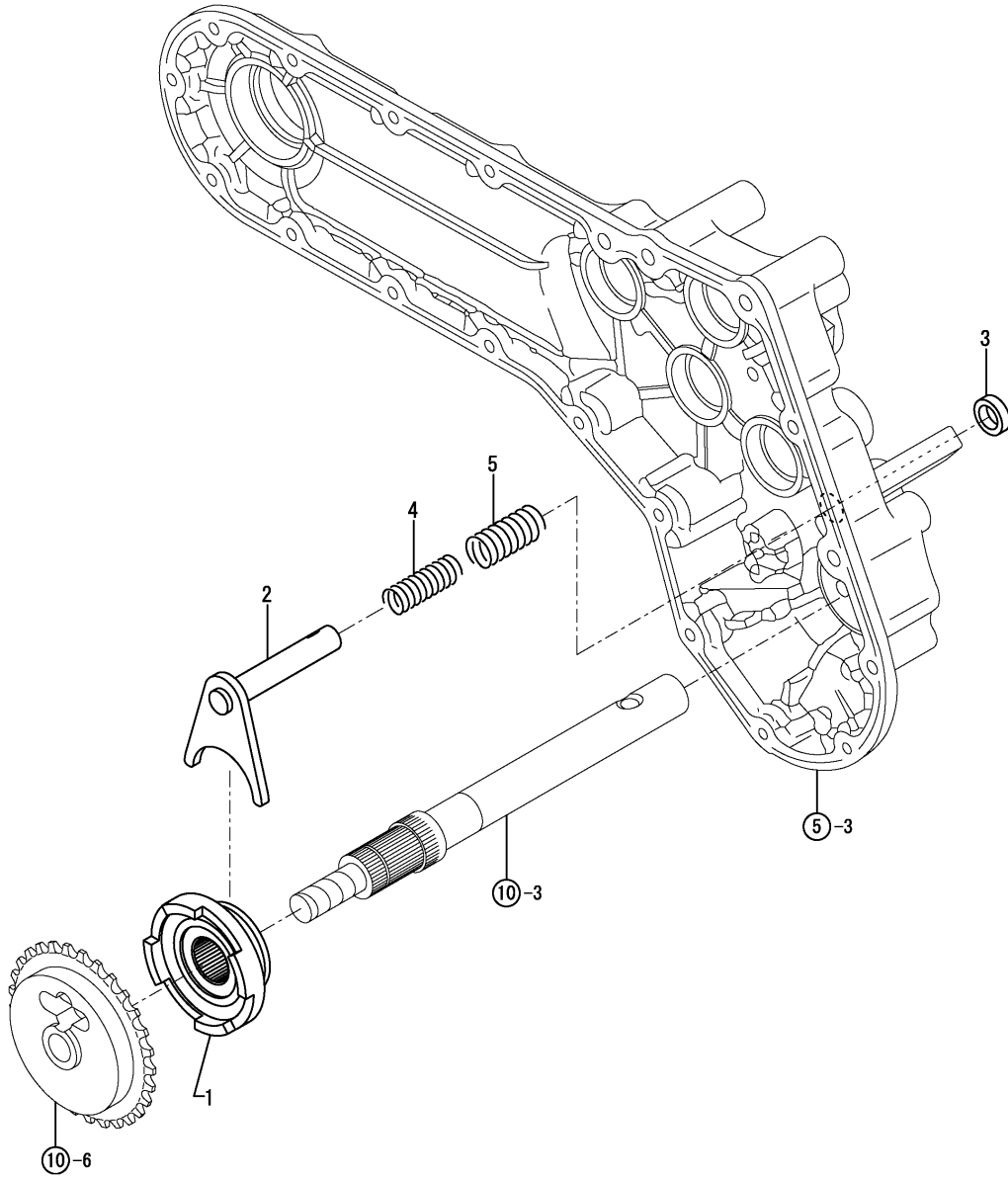
(E)=

(F)=

REF.	LEV.	PARTS NO.	DESCRIPTION	Q'TY						I	R
				(A)	(B)	(C)	(D)	(E)	(F)		
1	1	1E6050-19180	SEAL TC203510,OIL	2							
2	1	1A2580-24011	SHAFT, L	1							
3	1	1A2580-24021	SHAFT, R	1							
4	1	1A2580-24050	LINER 22.1X32X1.6	1							
5	1	1A2320-24100	CHAIN 9.525X36,ROL	1							
6	1	1A2580-24300	SPROCKET 29	1							
6-1	1	1A2580-24400	SPROCKET29 CMP	1							N
		(A=FXXXXX)									
6A	2	1E4070-16050	PIN, STRAIGHT 8X22	1							W
		(A=FXXXXX)									
6B	2	1A2580-24310	PINION	1							W
		(A=FXXXXX)									
6C	2	1A2580-24411	SPROCKET29	1							W
		(A=FXXXXX)									
6D	2	1A2580-24430	BUSH 8X10X8	1							W
		(A=FXXXXX)									
7	1	1A2580-24310	PINION	1							Z
		(A=FXXXXX)									
8	1	1A2580-24320	SHAFT, PINION	1							Z
		(A=FXXXXX)									
9	1	1A2580-24330	GEAR,	2							
10	1	22242-000220	CIRCLIP 22	1							
10-1	1	24164-000222	CIRCLIP S-22,NEEDLE	1							N
		(A=FXXXXX)									
11	1	24101-060044	BALL BEARING #6004	2							



Fig.11. DIFFERENTIAL(TO M100365)



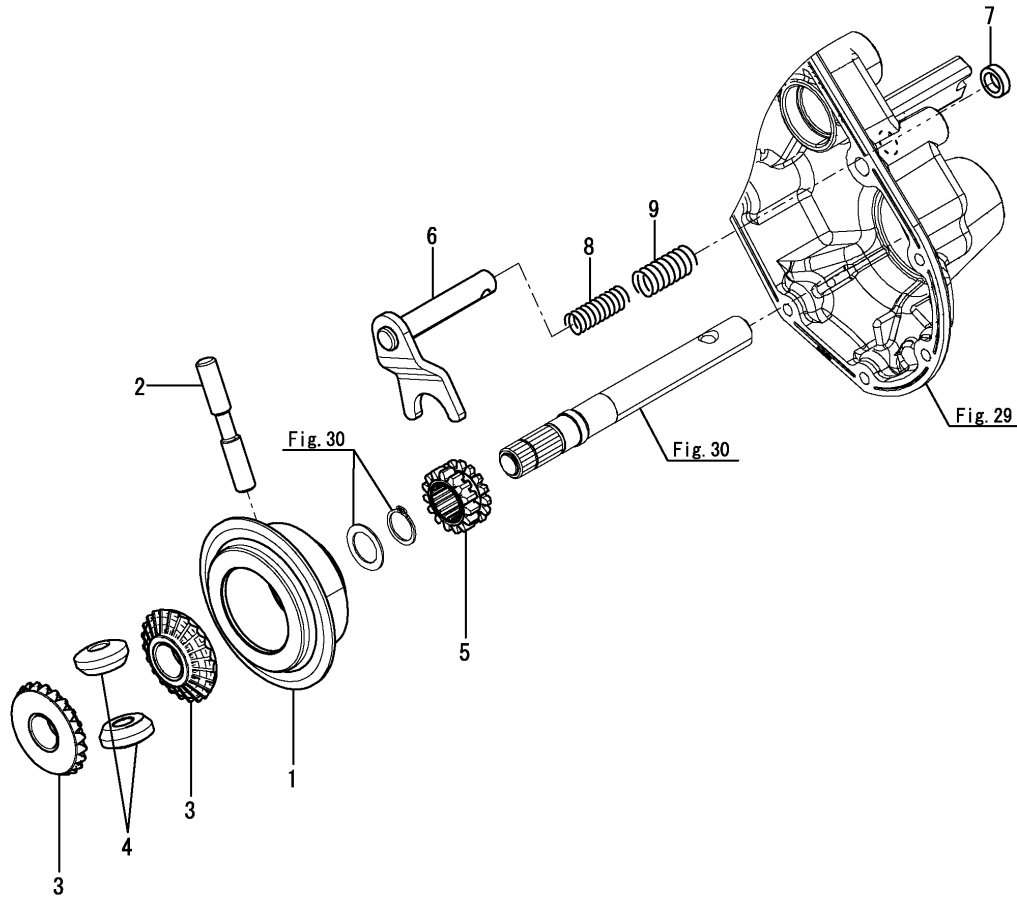
0CNP4-G75300 11. DIFFERENTIAL(TO M100365)

(A)=FP35,PQ  
(B)=  
(C)=

(D)=  
(E)=  
(F)=

REF.	LEV.	PARTS NO.	DESCRIPTION	Q'TY						I	R
				(A)	(B)	(C)	(D)	(E)	(F)		
1	1	1A2580-24340	CLUTCH	1							
2	1	1A2320-24350	FORK ASSY,LOCK	1							
3	1	1A2173-27900	SEAL, TC121805	1							
4	1	1A2190-55460	SPRING 13X38	1							
5	1	1A2190-55471	SPRING, 16X35	1							

Fig.31. (11A)DIFFERENTIAL(FROM M100366)



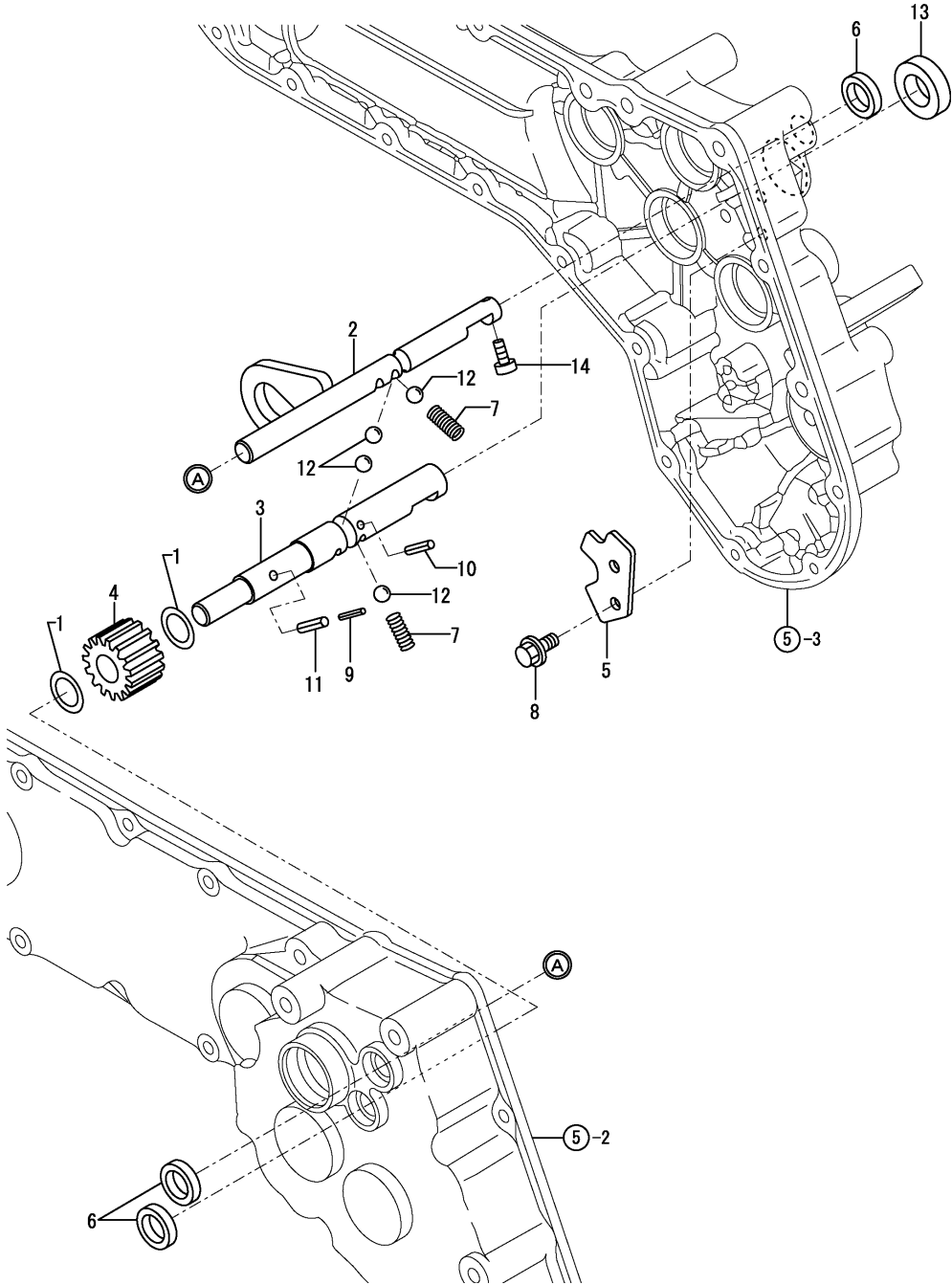
OCNP4-G75300 31. (11A)DIFFERENTIAL(FROM M100366)

(A)=FP35,PQ  
(B)=  
(C)=

(D)=  
(E)=  
(F)=

REF.	LEV.	PARTS NO.	DESCRIPTION	Q'TY						I	R
				(A)	(B)	(C)	(D)	(E)	(F)		
1	1	1A2780-24100	CASE, 29T	1							
2	1	1A2740-24150	SHAFT, PINION	1							
3	1	1A2780-24160	GEAR, SIDE	2							
4	1	1A2740-24170	PINION	2							
5	1	1A2170-24210	GEAR 15,DIFF.LOCK	1							
6	1	1A2780-24250	SHAFT CMP,DEFF	1							
7	1	1A2173-27900	SEAL, TC121805	1							
8	1	1A2190-55460	SPRING 13X38	1							
9	1	1A2190-55471	SPRING, 16X35	1							

Fig.12. MAIN CHANGE

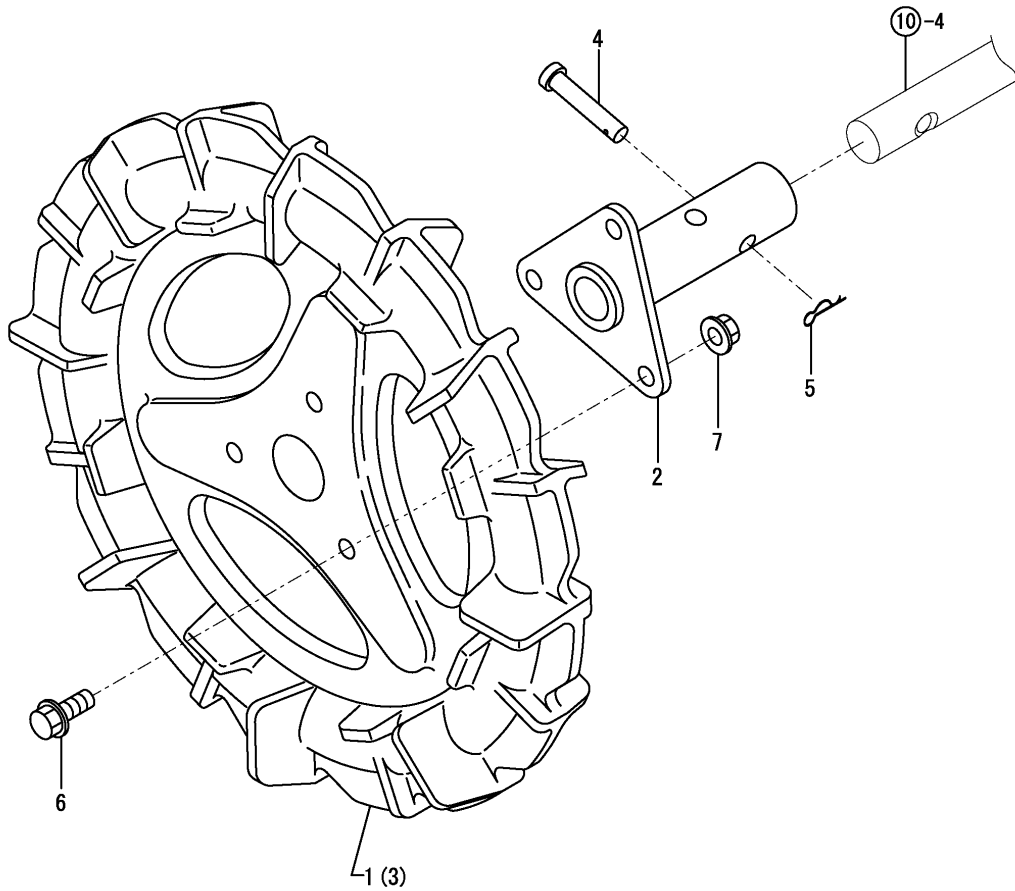


(A)=FP35,PQ  
(B)=  
(C)=

(D)=  
(E)=  
(F)=

REF.	LEV.	PARTS NO.	DESCRIPTION	QTY						I	R
				(A)	(B)	(C)	(D)	(E)	(F)		
1	1	1A1860-20280	SHIM 15.22.1.0	2							
2	1	1A2320-27001	SHAFT A COMP.,FORK	1							
3	1	1A2320-27100	SHAFT, FORK B	1							
4	1	1A2321-27110	GEAR 15	1							
5	1	1A2320-27300	PLATE	1							
6	1	1A2173-27900	SEAL, TC121805	3							
7	1	1E6150-56040	SPRING	2							
8	1	1A1750-90200	SCREW 6X12,COLLAR HD	2							
9	1	22351-030020	SPRING PIN 3X20	1							
10	1	22351-040020	SPRING PIN 4X20	1							
11	1	22351-050020	SPRING PIN 5X20	1							
12	1	24190-100001	BALL 5/16, STEEL	4							
13	1	24421-173008	SEAL TC17 30 08, OIL	1							
14	1	26450-060102	BOLT M 6X 10	1							

Fig.13. WHEEL



0CNP4-G75300 13. WHEEL

(A)=FP35,PQ  
(B)=  
(C)=

(D)=  
(E)=  
(F)=

REF.	LEV.	PARTS NO.	DESCRIPTION	Q'TY						I	R
				(A)	(B)	(C)	(D)	(E)	(F)		
1	1	1A2580-31500	TIRE, CULTI L	1							
2	1	1A2580-31550	BOSS ASSY, WHEEL	2							
3	1	1A2580-31600	TIRE, CULTI R	1							
4	1	1A1540-46010	PIN 8X35,FLAT HEAD	2							
5	1	1A1540-46020	PIN 8,SNAP	2							
6	1	26107-080202	BOLT M 8X 20 PLATED	6							
7	1	26367-080002	U-NUT M 8	6							

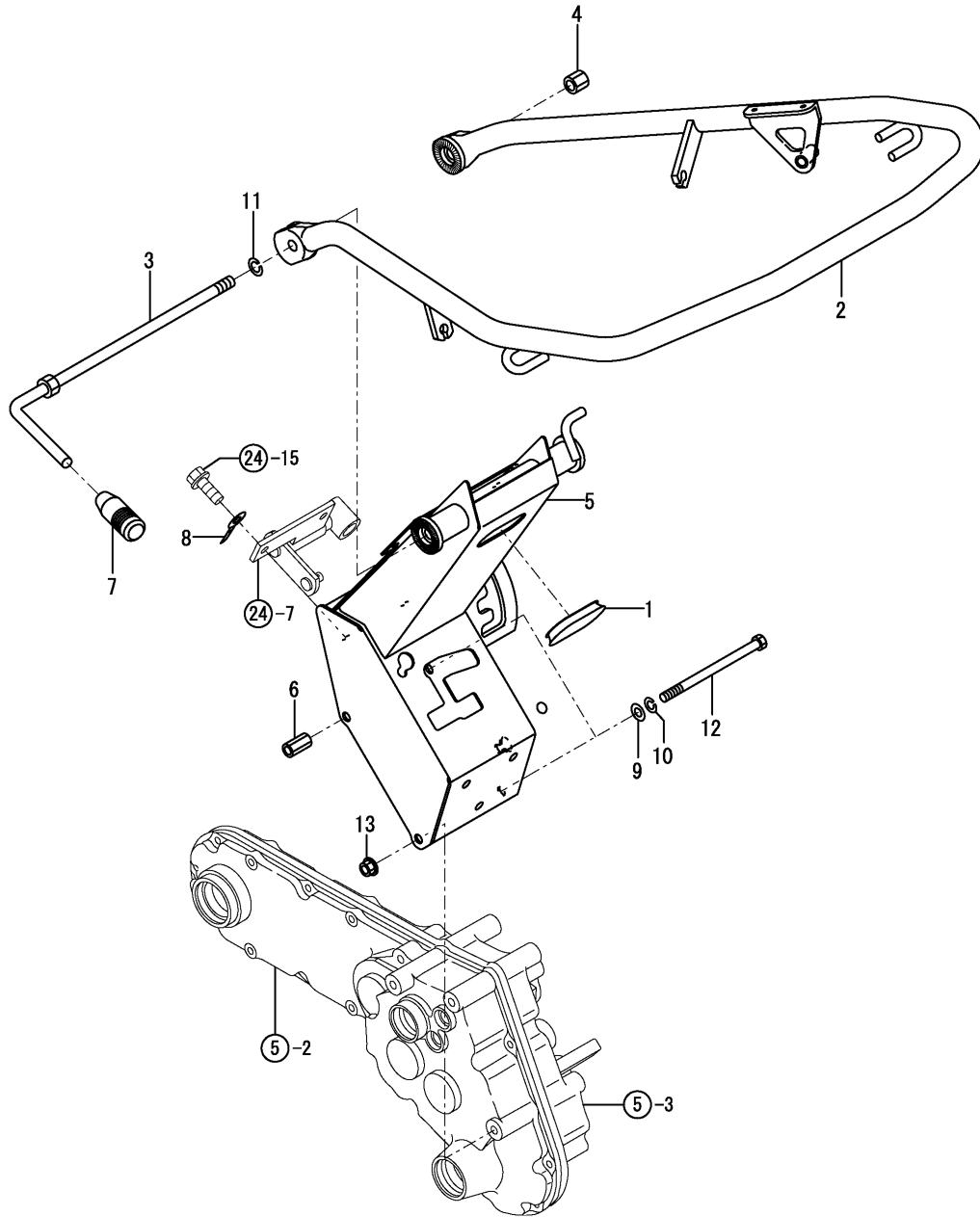








Fig.17. HANDLE

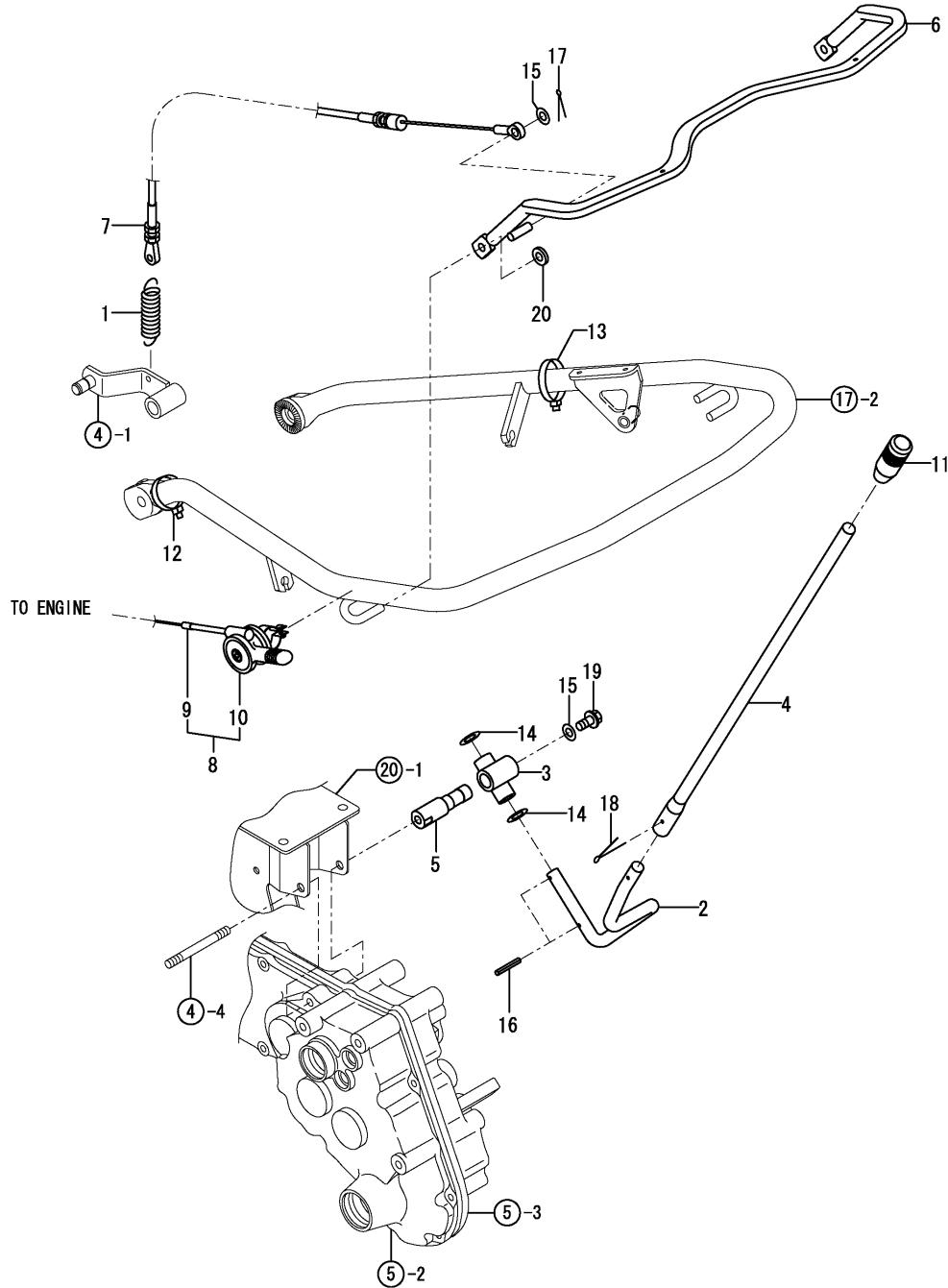


(A)=FP35,PQ  
(B)=  
(C)=

(D)=  
(E)=  
(F)=

REF.	LEV.	PARTS NO.	DESCRIPTION	Q'TY						I	R
				(A)	(B)	(C)	(D)	(E)	(F)		
1	1	1A1470-40301	BAND,WIRE PROTECTIVE	1							
2	1	1A2589-51500	HANDLE ASSY, PQ (14)	1							
3	1	1A2580-51800	LEVER ASSY, LOCK	1							
4	1	1A2490-51850	NUT,M10	1							
5	1	1A2580-55000	STAND ASSY (20)	1							
6	1	1A2320-55050	NUT M8X24	1							
6-1	1	1W4993-70390	NUT	1							R
(A=FXXXXXX)											
7	1	1E6570-65750	GRIP,CONT.LEVER BLK.	1							
8	1	160820-78710	CLAMP, CORD	1							
9	1	22137-080000	WASHER 8, POLISHED	2							
10	1	22217-080000	SPRING WASHER 8	2							
11	1	22287-100000	WASHER 10	1							
12	1	26117-081202	BOLT M 8X120 PLATED	2							
13	1	26367-080002	U-NUT M 8	1							

Fig.18. CONTROL LEVER



(A)=FP35,PQ

(B)=

(C)=

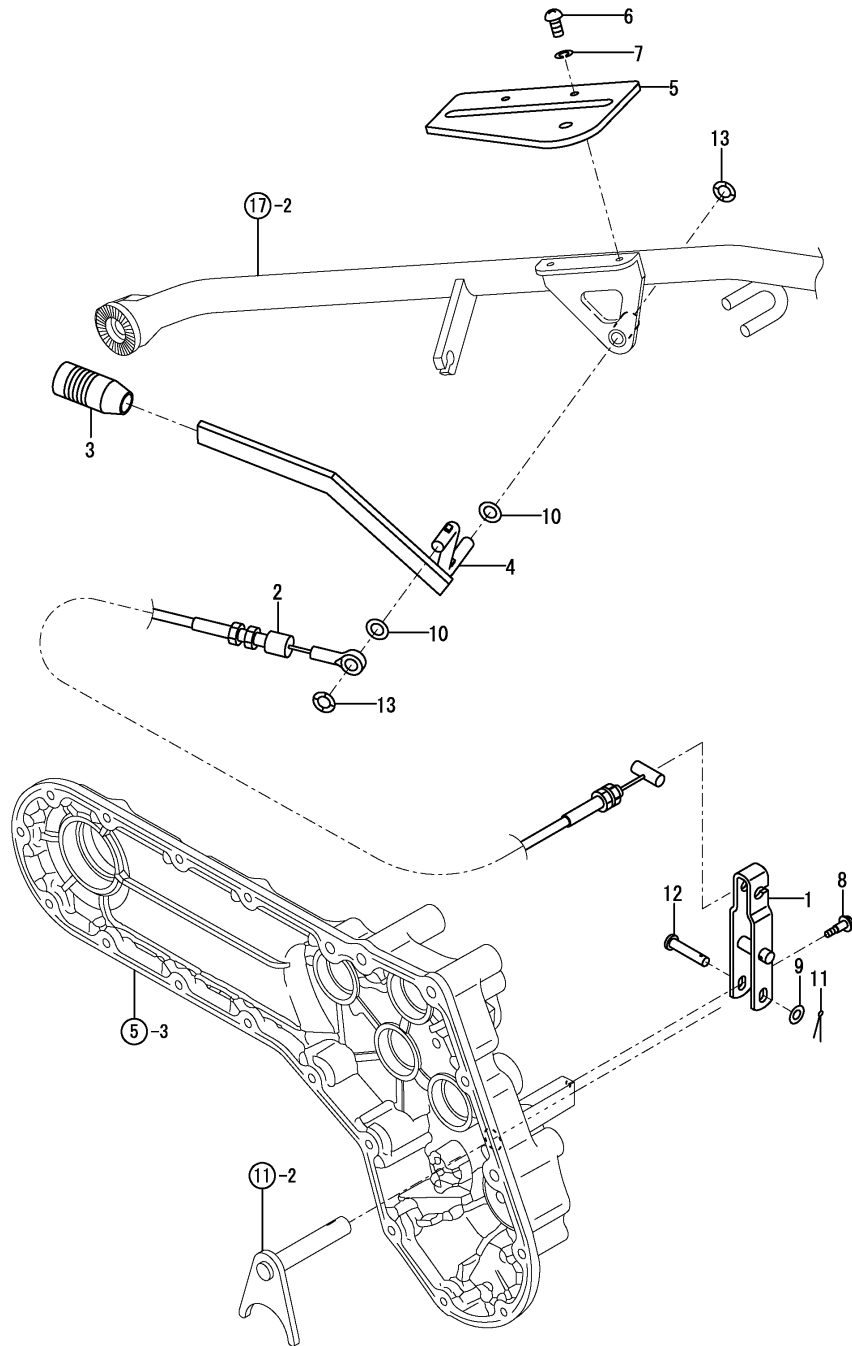
(D)=

(E)=

(F)=

REF.	LEV.	PARTS NO.	DESCRIPTION	QTY						I	R
				(A)	(B)	(C)	(D)	(E)	(F)		
1	1	1A1400-16000	SPRING 17.2X59	1							
2	1	1A2580-55100	LEVER	1							
3	1	1A2320-55200	FULCRUM COMP.,CHANGE	1							
4	1	1A2420-55200	LEVER,CHANGE	1							
5	1	1A2320-55250	LEVER	1							
6	1	1A2320-55300	LEVER	1							
7	1	1A2580-55510	WIRE, CLUTCH MAIN	1							
8	1	1A2589-55520	LEVER ASSY, PQ	1							
9	2	1A2580-55530	WIRE, ACCELERATOR	1							
10	2	1A2191-55581	LEVER,ACCELERATOR	1							
11	1	1A2220-55580	GRIP,ORANGE LEVER	1							
12	1	1A2320-55600	BAND, CABLE	2							
13	1	1A2320-55900	BAND	2							
14	1	22117-120000	WASHER 12	2							
15	1	22137-080000	WASHER 8, POLISHED	2							
16	1	22351-030020	SPRING PIN 3X20	2							
17	1	22417-200150	COTTER PIN 2.0X15	1							
18	1	22417-200250	COTTER PIN 2.0X25	1							
19	1	26107-080122	BOLT M 8X 12 PLATED	1							
20	1	26892-000800	NUT 8	2							

Fig.19. DIFFERENTIAL LOCK CONTROL



0CNP4-G75300 19. DIFFERENTIAL LOCK CONTROL

(A)=FP35,PQ

(B)=

(C)=

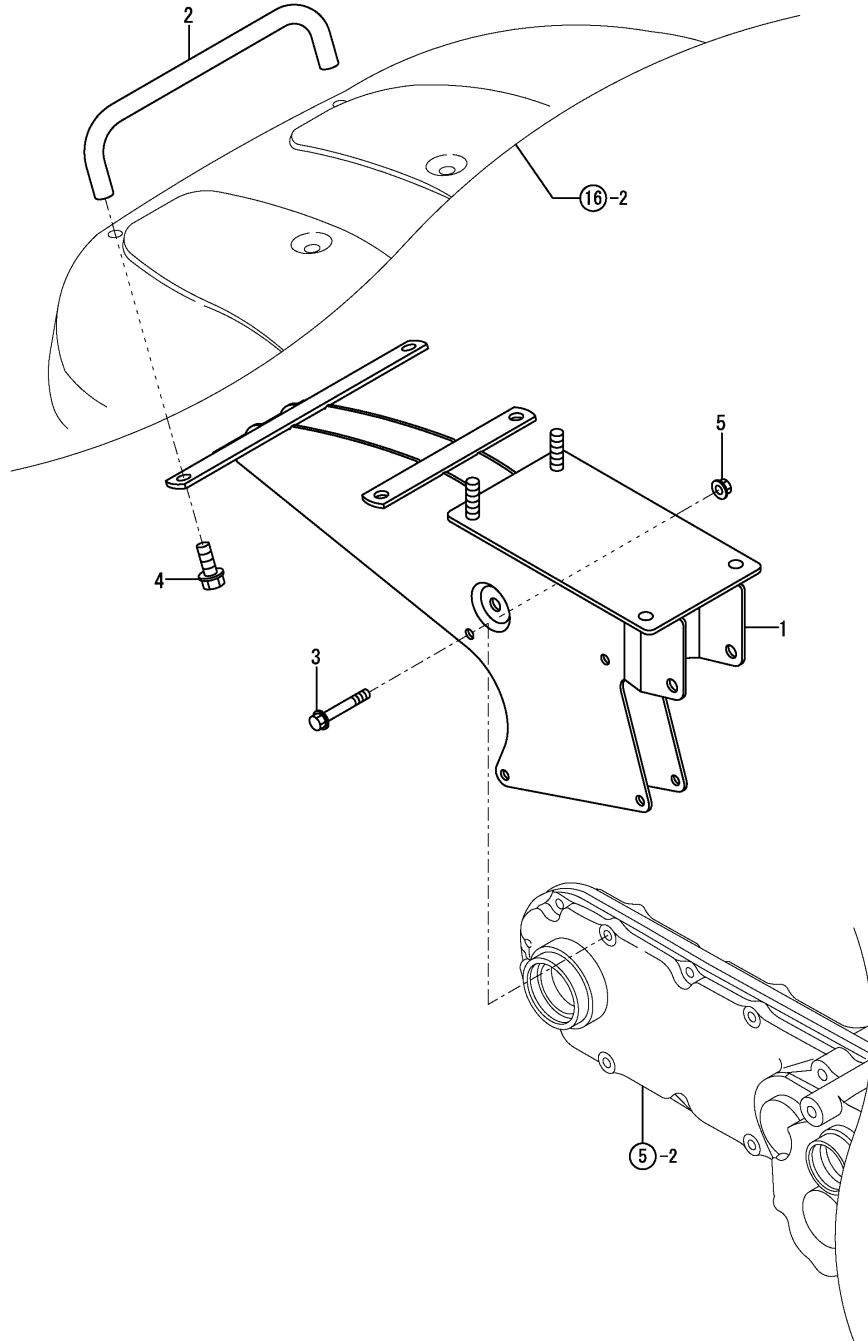
(D)=

(E)=

(F)=

REF.	LEV.	PARTS NO.	DESCRIPTION	QTY						I	R
				(A)	(B)	(C)	(D)	(E)	(F)		
1	1	1A2320-55350	ARM ASSY, LOCK	1							
2	1	1A2580-55561	WIRE ASSY, LOCK	1							
3	1	1A2220-55570	GRIP, YELLOW LEVER	1							
4	1	1A2580-55700	LEVER ASSY, LOCK	1							
5	1	1A2320-55750	LEVER GUIDE	1							
6	1	1A1750-90050	SCREW 5X10,TAPPING	2							
7	1	1A1750-90110	WASHER 5,SPRING	2							
8	1	1A1750-90200	SCREW 6X12,COLLAR HD	1							
9	1	22137-060000	WASHER 6, POLISHED	1							
10	1	22137-080000	WASHER 8, POLISHED	2							
11	1	22417-160160	COTTER PIN 1.6X16	1							
12	1	22487-060260	PIN 6X26,FLAT HEAD	1							
13	1	26892-000800	NUT 8	2							

Fig.20. ENGINE FRAME



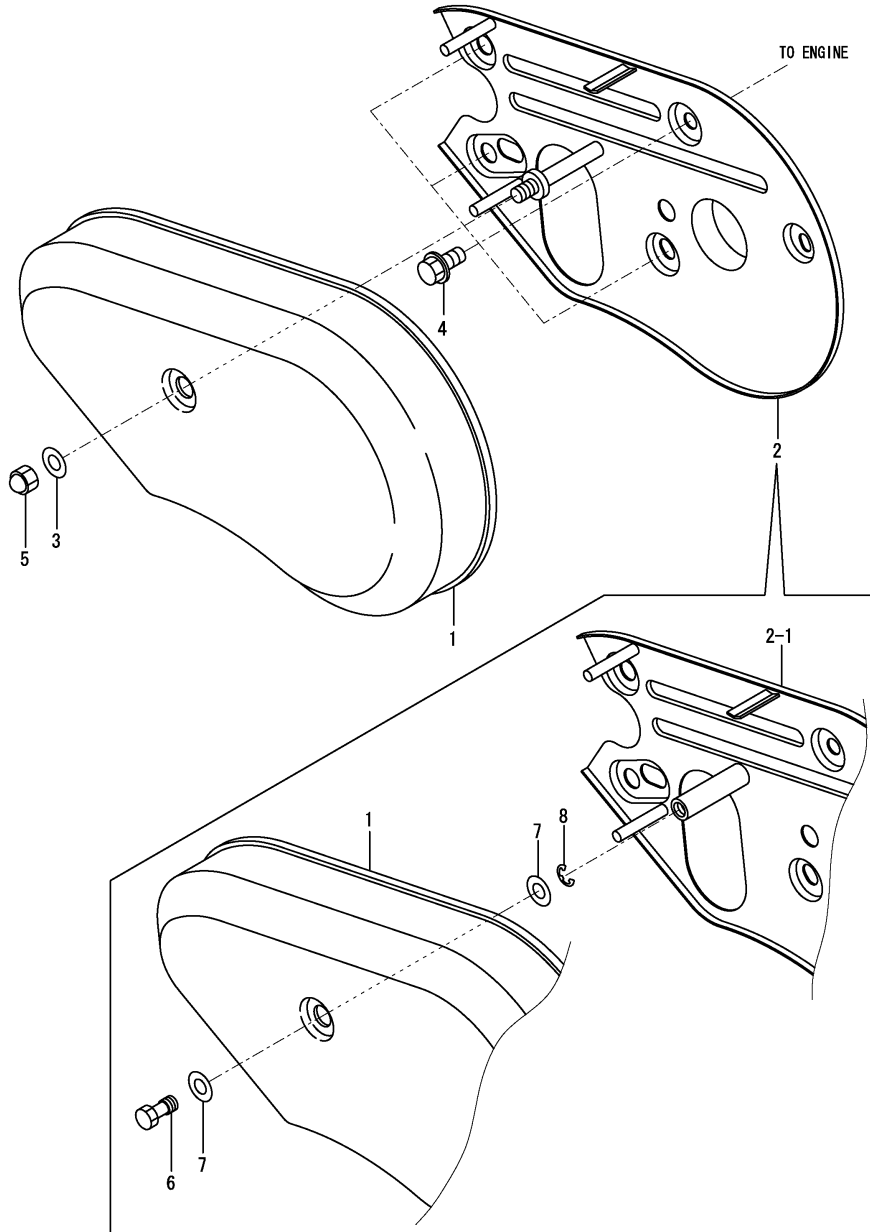
0CNP4-G75300 20. ENGINE FRAME

(A)=FP35,PQ  
(B)=  
(C)=

(D)=  
(E)=  
(F)=

REF.	LEV.	PARTS NO.	DESCRIPTION	QTY						I	R
				(A)	(B)	(C)	(D)	(E)	(F)		
1	1	1A2580-61000	FRAME ASSY	1							
2	1	1A2580-61200	BUMPER	1							
3	1	26106-060402	BOLT M 6X 40 PLATED	2							
4	1	26107-080162	BOLT M 8X 16 PLATED	2							
5	1	26367-060002	NUT M 6	2							

Fig.21. BELT COVER



0CNP4-G75300 21. BELT COVER

(A)=FP35,PQ  
(B)=  
(C)=

(D)=  
(E)=  
(F)=

REF.	LEV.	PARTS NO.	DESCRIPTION	QTY						I	R
				(A)	(B)	(C)	(D)	(E)	(F)		
1	1	1A2580-62000	COVER, BELT	1							
2	1	1A2580-62300	BACK COVER ASSY	1							
2-1	1	1A2589-62200	BACK COVER ASSY	1						F	1
3	1	22137-080000	WASHER 8, POLISHED	1							Z
4	1	26106-080122	BOLT M 8X 12 PLATED	4							Z
5	1	26657-080002	CAP NUT M 8	1							Z
6	1	1A2132-62050	BOLT	1							W
7	1	22137-080000	WASHER 8, POLISHED	2							W
8	1	22272-000060	CIRCLIP E- 6	1							W

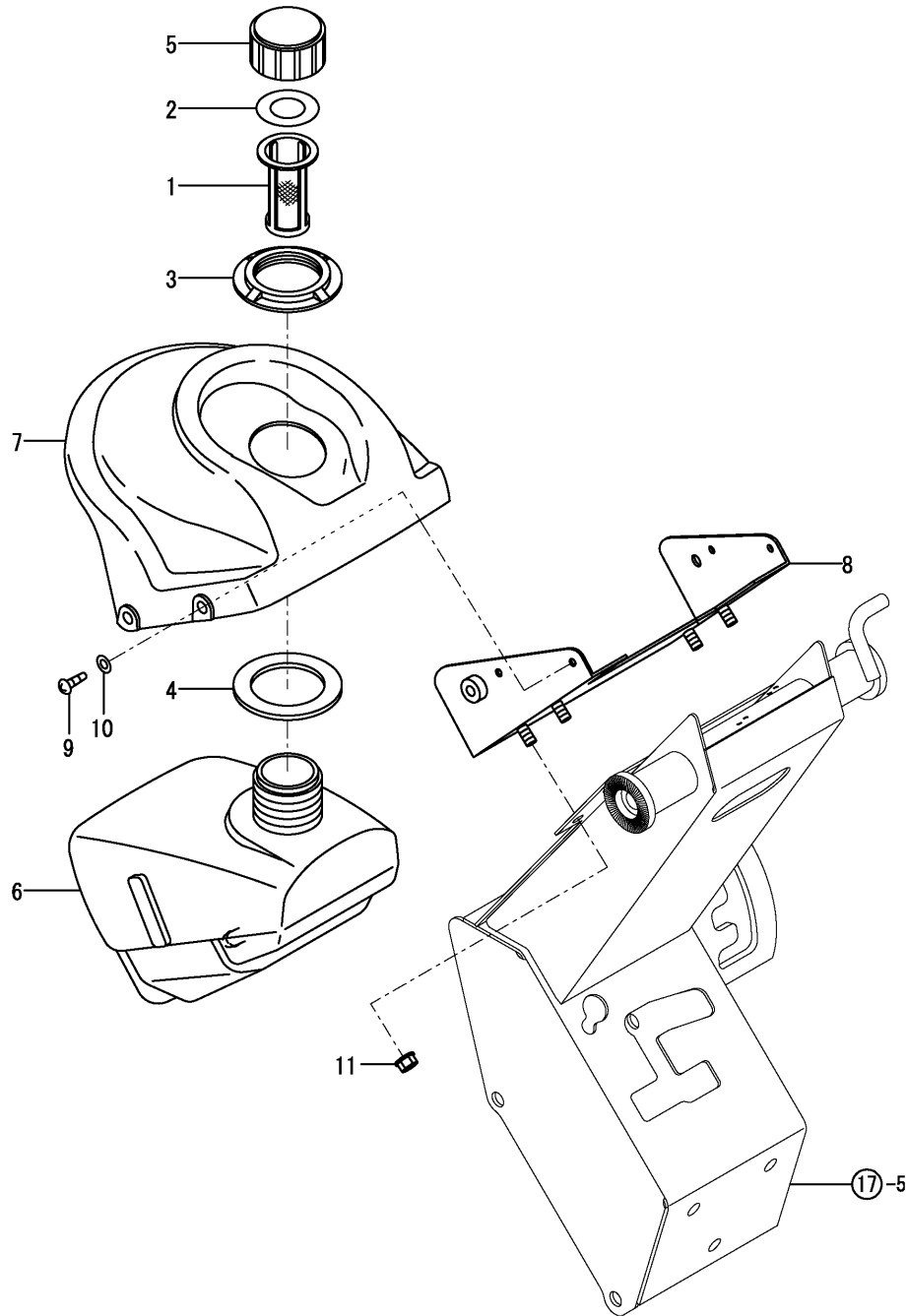
Remarks  
(1)INTERCHANGEABLE BY SIMULTANEOUS  
REPLACEMENT WITH REF.6,7 & 8.



Fig.22. FUEL TANK

(A)=FP35,PQ  
(B)=  
(C)=

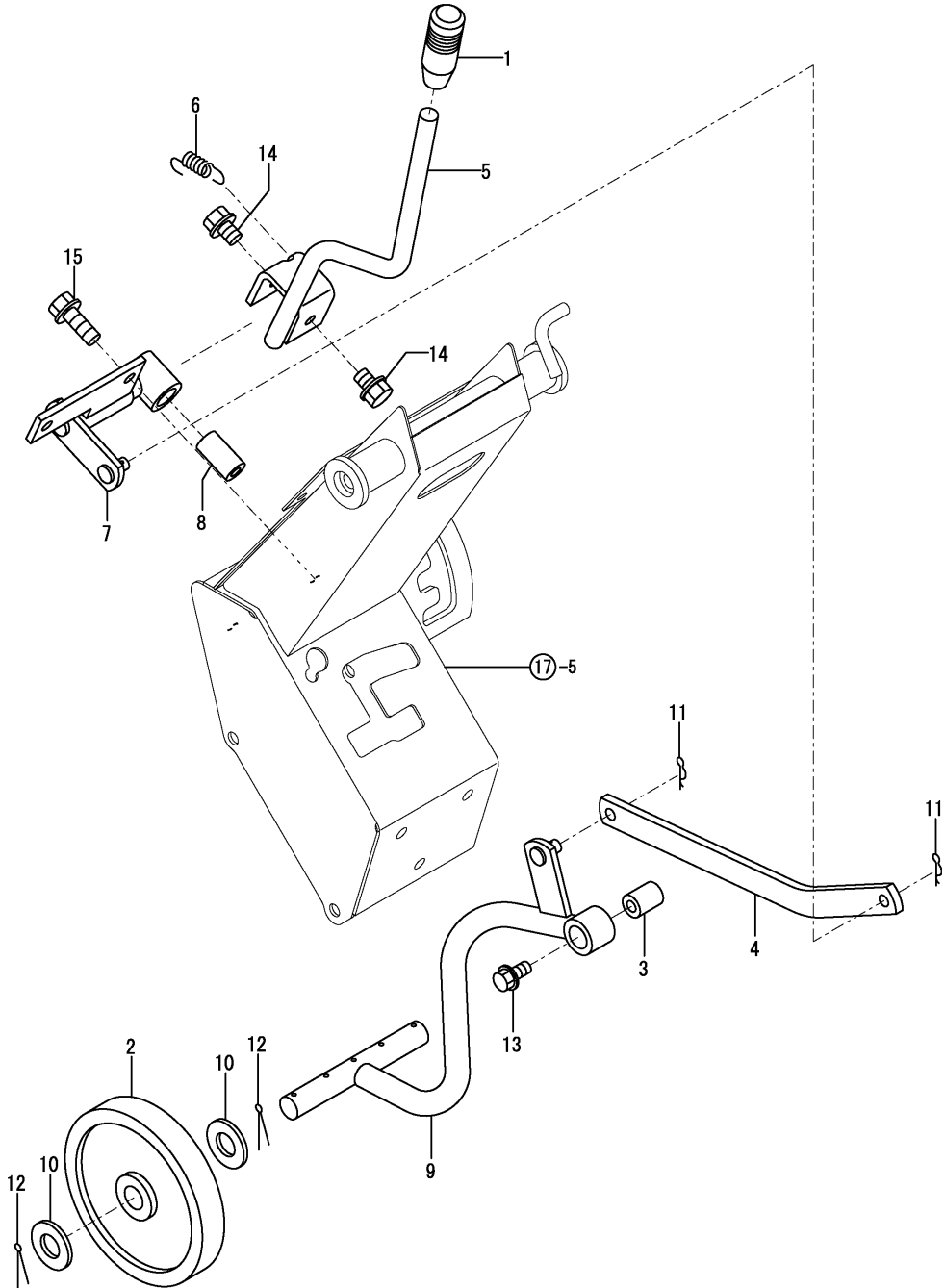
(D)=  
(E)=  
(F)=



REF.	LEV.	PARTS NO.	DESCRIPTION	QTY						I	R
				(A)	(B)	(C)	(D)	(E)	(F)		
1	1	1D2042-41200	STRAINER,FUEL	1							
2	1	1D2040-48010	PACKING,FUEL TK.CAP	1							
3	1	1A1540-62110	RING,MOUNTING	1							
4	1	1A1540-62140	CUSHION,TANK	1							
5	1	1A1540-62170	CAP,FUEL TANK	1							
6	1	1A2190-63010	TANK, FUEL	1							
7	1	1A2690-63010	COVER, TANK	1							
8	1	1A2580-63100	COVER ASSY	1							
9	1	1A1750-90050	SCREW 5X10,TAPPING	4							
10	1	1A1750-90150	WASHER 5,PLAIN	4							
11	1	26367-060002	NUT M 6	4							



Fig.24. FRONT WHEEL



0CNP4-G75300 24. FRONT WHEEL

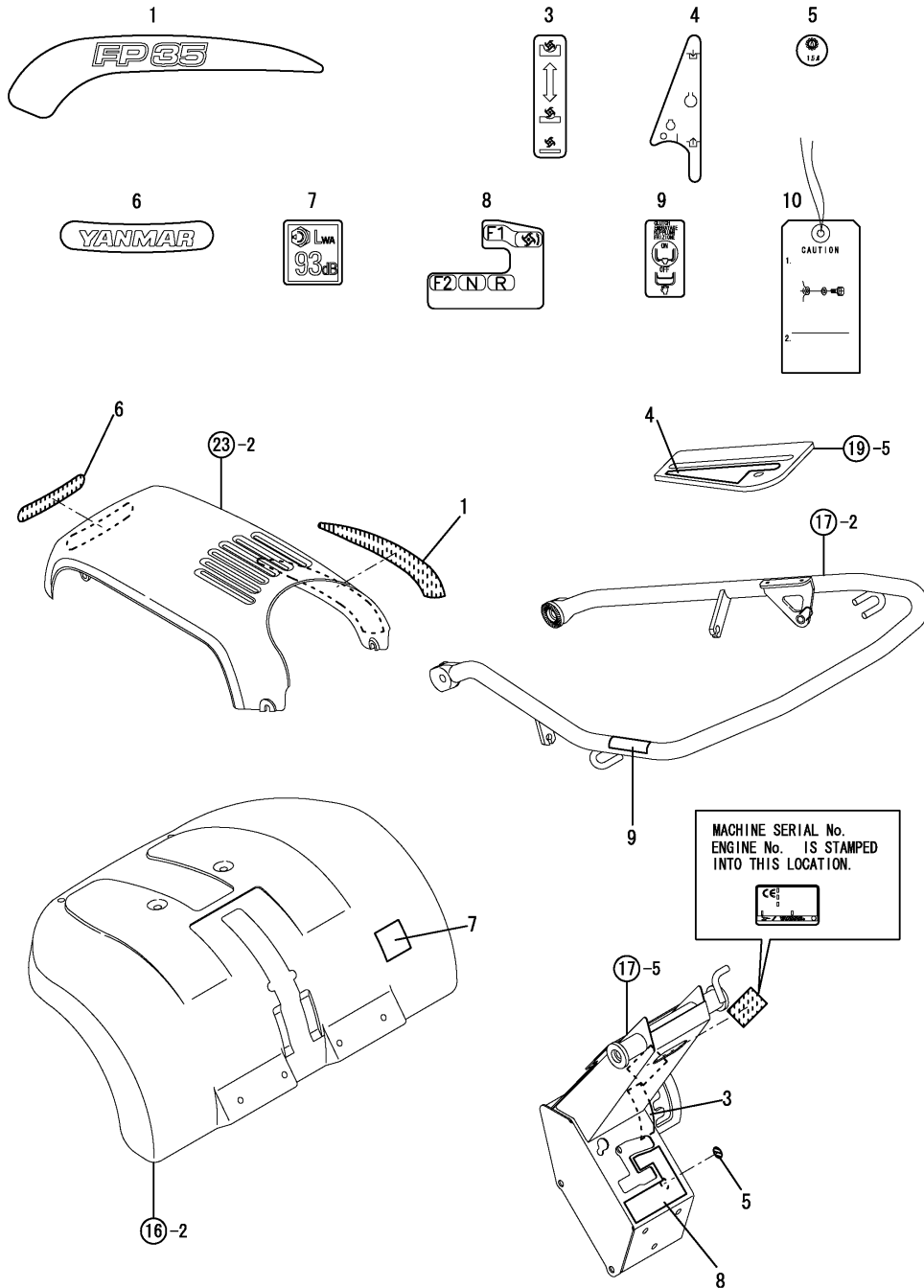
(A)=FP35,PQ  
(B)=  
(C)=

(D)=  
(E)=  
(F)=

REF.	LEV.	PARTS NO.	DESCRIPTION	Q'TY						I	R
				(A)	(B)	(C)	(D)	(E)	(F)		
1	1	1E6570-65750	GRIP,CONT.LEVER BLK.	1							
2	1	1A2580-71000	WHEEL, FRONT	2							
3	1	1A2320-71090		1							
4	1	1A2580-71100	STAY	1							
5	1	1A2580-71250	LEVER ASSY	1							
6	1	1A2580-71280	SPRING	1							
7	1	1A2580-71300	FULCRUM ASSY	1							
8	1	1A2580-71350	PIN, LEVER	1							
9	1	1A2580-71800	ARM ASSY	1							
10	1	22137-160000	WASHER 16,POLISHED	4							
11	1	22372-080000	SNAP PIN (JASO 8)	2							
12	1	22417-300300	COTTER PIN 3.0X30	4							
13	1	26107-080122	BOLT M 8X 12 PLATED	2							
14	1	26107-080122	BOLT M 8X 12 PLATED	2							
15	1	26107-080202	BOLT M 8X 20 PLATED	2							



Fig.26. LABELS



(A)=FP35,PQ

(B)=

(C)=

(D)=

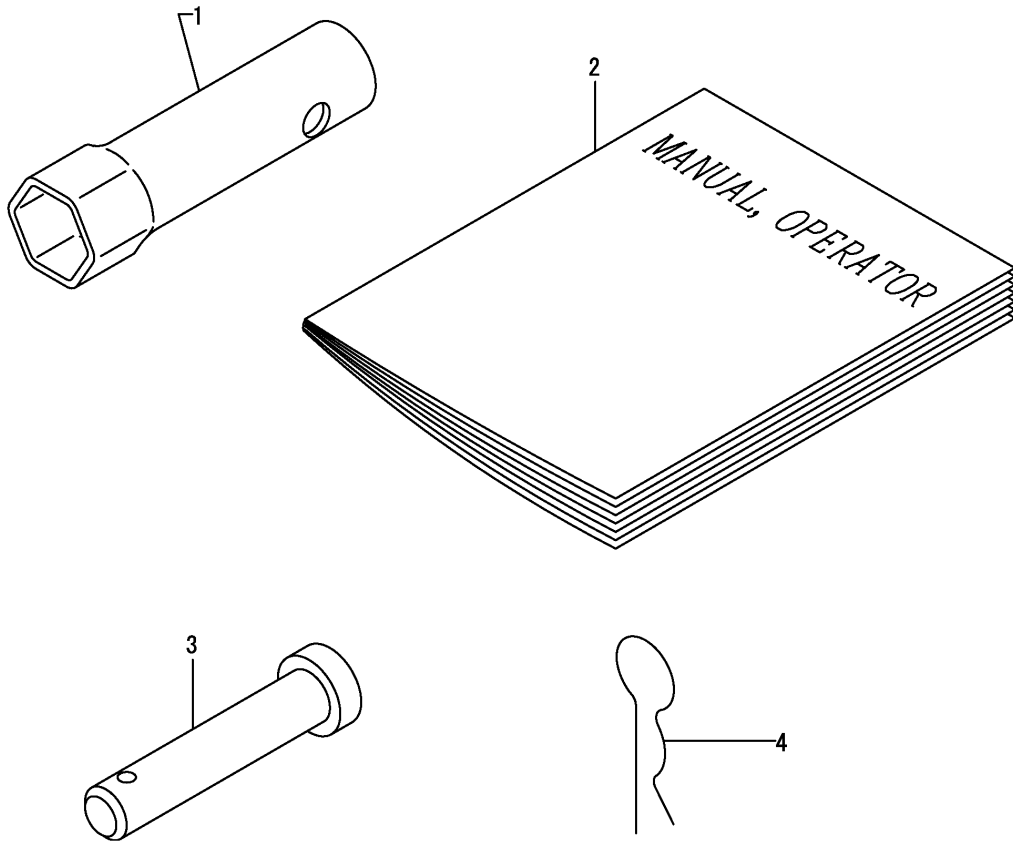
(E)=

(F)=

REF.	LEV.	PARTS NO.	DESCRIPTION	QTY						I	R
				(A)	(B)	(C)	(D)	(E)	(F)		
1	1	1A2589-86010	LABEL, MODEL(PQ	1							
3	1	1A2589-86100	LABEL	1							
4	1	1A2489-86120	LABEL	1							
5	1	1A2589-86150	LABEL, OIL 1.5	1							
6	1	1A2580-86200	RABEL	1							
7	1	1A2179-86210		1							
8	1	1A2589-86500	LABEL, CHANGE(PQ	1							
9	1	1A2170-86920	LABEL EX,MAIN CLUTCH	1							
10	1	1A2170-86930	CAP,OIL CAUTION	1							



Fig.28. TOOL & ACCESSORIES



0CNP4-G75300 28. TOOL & ACCESSORIES

(A)=FP35,PQ  
(B)=  
(C)=

(D)=  
(E)=  
(F)=

REF.	LEV.	PARTS NO.	DESCRIPTION	QTY						I	R
				(A)	(B)	(C)	(D)	(E)	(F)		
1	1	1A2190-87100	BOX, SPANNER	1							
2	1	1A2589-88000	MANUAL, PQ	1							
2-1	1	1A2589-88001	MANUAL, PQ	1							N
			(A=FZZZZZ)								
3	1	1A1735-31700	PIN,AXLE	2							
4	1	1A1540-46020	PIN 8,SNAP	2							

## Part Number Index

All parts are stipulated in the order of part numbers.

(Depending on the area in which the part is used.)

This index will display the location of the part according to each part number.



## PARTS No. INDEX

PARTS No.	Fig.	Ref.No.
106990-44660	1	6
124060-77680	1	7
160820-78710	17	8
	25	3
1A1105-23200	30	2
1A1400-16000	18	1
1A1470-20090	5	1
	29	1
1A1470-40301	17	1
1A1540-46010	13	4
1A1540-46020	13	5
	15	6
	28	4
1A1540-62110	22	3
1A1540-62140	22	4
1A1540-62170	22	5
1A1735-31700	15	1
	28	3
1A1750-20440	14	1
1A1750-20491	14	2
1A1750-40800	25	2
1A1750-90050	19	6
	22	9
1A1750-90110	19	7
1A1750-90150	22	10
1A1750-90200	12	8
	19	8
	23	6
1A1860-20280	12	1
1A2120-13120	4	3
1A2132-62050	21	6
1A2170-24210	31	5
1A2170-86920	26	9
1A2170-86930	26	10
1A2171-51400	29	4
1A2173-27900	11	3
	12	6
	31	7
1A2179-86210	26	7
1A2190-55460	11	4
	31	8
1A2190-55471	11	5
	31	9
1A2190-63010	22	6
1A2190-87100	28	1
1A2191-55581	18	10
1A2199-86700	27	1
1A2199-86720	27	2
1A2199-86900	27	3
1A2220-55570	19	3

PARTS No.	Fig.	Ref.No.
1A2220-55580	18	11
1A2320-12100	2	1
1A2320-12200	2	2
1A2320-13000	4	1
1A2320-13100	4	2
1A2320-13200	4	4
1A2320-13250	4	5
1A2320-13300	3	1 -1
1A2320-13301	3	1 -2
1A2320-21000	5	2
1A2320-21010	5	3
1A2320-23150	7	3
1A2320-24100	10	5
	30	6
1A2320-24350	11	2
1A2320-27001	12	2
1A2320-27100	12	3
1A2320-27300	12	5
1A2320-42050	14	4
1A2320-42060	14	5
1A2320-55050	17	6
1A2320-55200	18	3
1A2320-55250	18	5
1A2320-55300	18	6
1A2320-55350	19	1
1A2320-55600	18	12
1A2320-55750	19	5
1A2320-55900	18	13
1A2320-71090	24	3
1A2321-13300	3	1
1A2321-23000	6	1
1A2321-23011	6	2
1A2321-23100	7	1
1A2321-23140	7	2
1A2321-23200	8	1
1A2321-23300	9	1
1A2321-27110	12	4
1A2321-42000	14	3
1A2420-55200	18	4
1A2489-86120	26	4
1A2490-51850	17	4
1A2580-11010	1	1
1A2580-11030	1	2
1A2580-11100	1	3
1A2580-11200	1	4
1A2580-11500	1	5
1A2580-24011	10	2
1A2580-24021	10	3
1A2580-24050	10	4
1A2580-24300	10	6

PARTS No.	Fig.	Ref.No.
1A2580-24310	10	6 B
		7
1A2580-24320	10	8
1A2580-24330	10	9
1A2580-24340	11	1
1A2580-24400	10	6 -1
1A2580-24411	10	6 C
1A2580-24430	10	6 D
1A2580-31500	13	1
1A2580-31550	13	2
1A2580-31600	13	3
1A2580-43001	15	2
1A2580-43011	15	3
1A2580-43100	15	4
1A2580-43110	15	5
1A2580-44611	16	3
1A2580-44620	16	4
1A2580-44700	16	5
1A2580-51800	17	3
1A2580-55000	17	5
1A2580-55100	18	2
1A2580-55510	18	7
1A2580-55530	18	9
1A2580-55561	19	2
1A2580-55700	19	4
1A2580-61000	20	1
1A2580-61200	20	2
1A2580-62000	21	1
1A2580-62300	21	2
1A2580-63100	22	8
1A2580-64110	23	2
1A2580-64120	23	3
1A2580-64500	23	4
1A2580-71000	24	2
1A2580-71100	24	4
1A2580-71250	24	5
1A2580-71280	24	6
1A2580-71300	24	7
1A2580-71350	24	8
1A2580-71800	24	9
1A2580-86200	26	6
1A2589-51500	17	2
1A2589-55520	18	8
1A2589-62200	21	2 -1
1A2589-86010	26	1
1A2589-86100	26	3
1A2589-86150	26	5
1A2589-86500	26	8
1A2589-88000	28	2
1A2589-88001	28	2 -1

PARTS No.	Fig.	Ref.No.
1A2690-63010	22	7
1A2740-13300	3	1 -3
1A2740-24150	31	2
1A2740-24170	31	4
1A2780-21000	29	2
1A2780-21010	29	3
1A2780-23400	9	1 -1
1A2780-24000	30	3
1A2780-24010	30	4
1A2780-24050	30	5
1A2780-24100	31	1
1A2780-24160	31	3
1A2780-24250	31	6
1D1605-88880	23	5
1D1630-51050	2	3
1D2040-48010	22	2
1D2042-41200	22	1
1E4070-16050	10	6 A
1E6050-19180	10	1
	30	1
1E6150-56040	12	7
1E6570-65750	17	7
	24	1
1W0224-09802	16	1
1W4852-30610	25	1
1W4993-70390	17	6 -1
7A2589-44010	16	2
7A2589-64100	23	1



***YANMAR CO.,LTD.***